



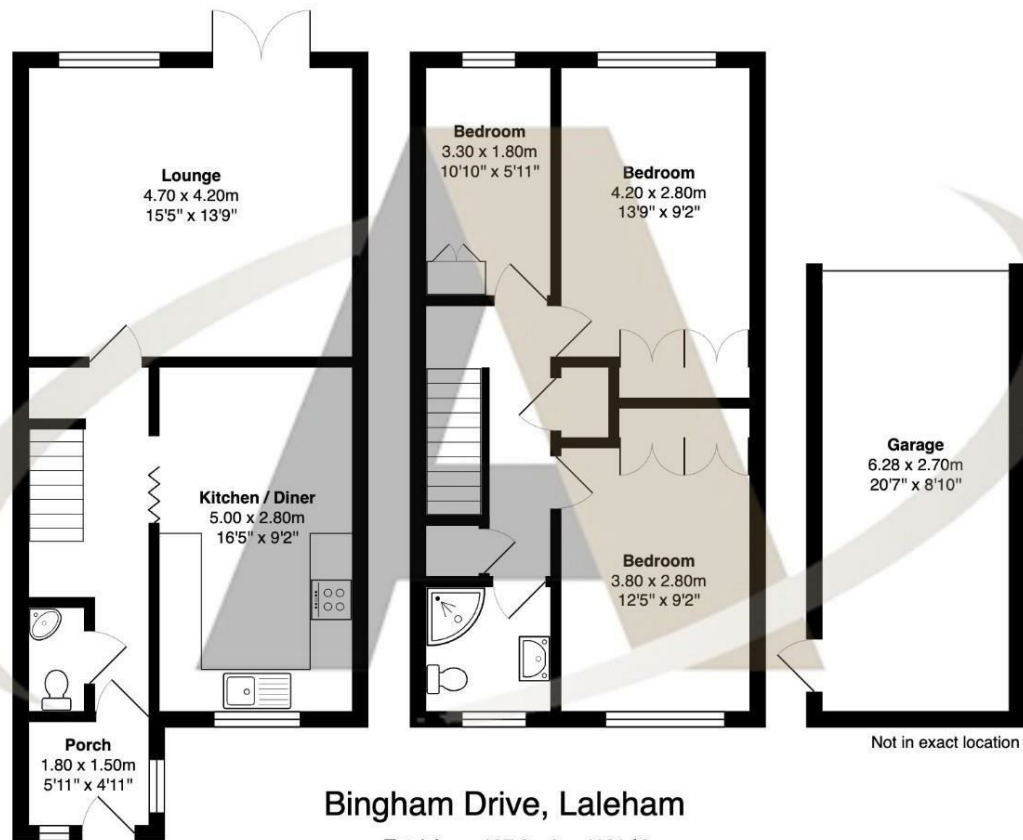
29 Bingham Drive, Laleham, TW18 1QX

Nestled in the sought-after Bingham Drive in Laleham, Staines, this beautifully presented three-bedroom terraced house is offered in excellent condition throughout and is ideal for families or those seeking generous living space. Upstairs, you'll find three well-proportioned bedrooms, each benefiting from built-in storage, a stylish and modern shower room, and two additional large storage cupboards, providing plenty of room for practical everyday living.

The ground floor features a spacious kitchen diner, perfect for entertaining or family meals, and a bright, welcoming reception room that opens out onto a charming rear garden. The garden boasts a lovely patio area ideal for alfresco dining, a well-maintained lawn, and access to a larger-than-average garage. This attractive home is already drawing strong interest and will be showcased at an open house event on Saturday 3rd May. Early viewing is highly recommended—contact Aspen Estate Agents today to secure your appointment.



Floor Plan



Bingham Drive, Laleham

Total Area: 107.9 m² ... 1161 ft²

All measurements are approximate and for display purposes only



Features

- Located in the highly sought-after Bingham Drive, Laleham, Staines
- Three generously sized bedrooms, all with built-in storage
- Spacious kitchen diner, ideal for family meals and entertaining
- Private garden featuring a patio area, lawn, and access to a larger-than-average garage
- Beautifully presented three-bedroom terraced house in excellent condition throughout
- Modern and stylish shower room, plus two large additional storage cupboards upstairs
- Bright and airy reception room with direct access to the rear garden
- Open house event on Saturday 3rd May – contact Aspen Estate Agents to arrange your viewing

Aspen Residential Services
77 Church Road, Ashford, Surrey, TW15 2PE
Tel: 01784 252 202
Email: enquiries@aspensalesandlettings.com



Tenure - Freehold Council Tax Band - D

