



1 Dencliffe Church Road, Ashford, TW15 2PF

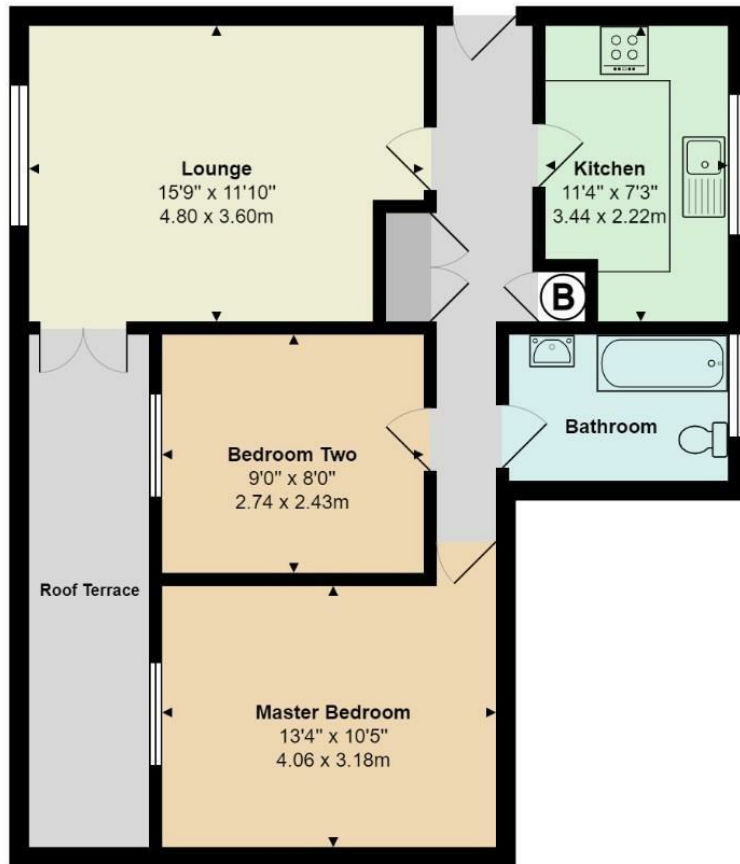
£1,150 Per Month

# 1 Dencliffe Church Road, Ashford, TW15 2PF

Located within the heart of Ashford Town Centre in a popular development this first floor apartment is moments from the High Street. The apartment was redecorated throughout in 2021 and benefits from a larger than average balcony. Communal entrance with secure entry, large hallway with ample storage, two double bedrooms, modern bathroom and a modern kitchen with appliances. Available JUNE on a part furnished basis, please call for further details and to arrange a viewing.



# Floor Plan



## Features

- First Floor Apartment
- Modern Kitchen with Appliances
- Private Balcony
- Secure Entry
- Part Furnished
- Two Double Bedrooms
- Bathroom
- Town Centre Location
- Redecorated Throughout
- AVAILABLE JUNE

