



32a Woodthorpe Road, Ashford, TW15 2RU

£1,350 Per Month

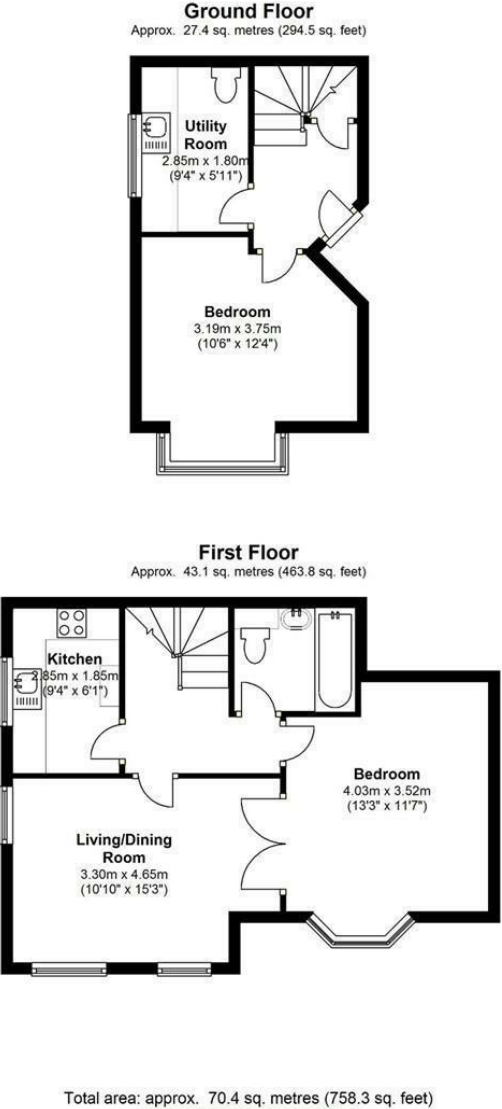


## 32a Woodthorpe Road, Ashford, TW15 2RU

Newly painted throughout is this spacious two double bedroom split level maisonette located a three minute walk from Ashford's train station and shops. On the ground floor this well presented property offers a double bedroom and utility/cloakroom. On the first floor there is a living room, modern kitchen, bathroom and further double bedroom. Outside there is a garden area and two parking spaces.



Floor Plan



Features

- Split Level Maisonette
- Modern Kitchen
- Walk to the Station
- Utility Room with Cloakroom
- AVAILABLE NOW
- Spacious Reception Room
- Allocated Parking
- Two Double Bedrooms
- Freshly Painted
- UNFURNISHED



