



2 Lodge Way, Ashford, TW15 3AH

£625,000

2 Lodge Way, Ashford, TW15 3AH

Nestled in the desirable area of Lodge Way, Ashford, this spacious five-bedroom semi-detached family house presents an excellent opportunity for those seeking a comfortable and versatile home. The property boasts two well-appointed reception rooms, providing ample space for both relaxation and entertaining.

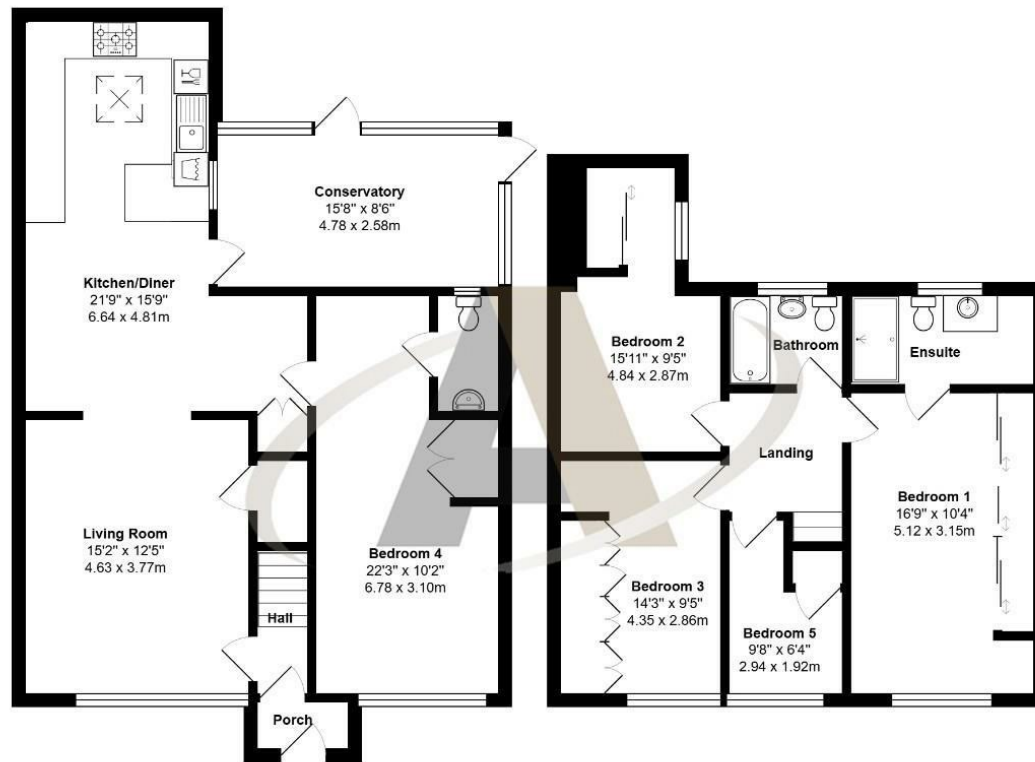
One of the standout features of this residence is the large ground floor bedroom, complete with a cloakroom, making it an ideal space for multi-generational living or accommodating guests. The heart of the home is undoubtedly the expansive open-plan kitchen and dining area, which is equipped with built-in appliances, ensuring a seamless cooking and dining experience.

The master bedroom is a true retreat, featuring an en-suite for added privacy and convenience. In addition, there is a further family bathroom that serves the remaining bedrooms, catering to the needs of a growing family.

With no onward chain, this property is ready for you to move in and make it your own. Whether you are looking for a family home or a property with the potential for multi-generational living, this house on Lodge Way is sure to impress. Don't miss the chance to view this wonderful home and envision the possibilities it holds for you and your family.



Floor Plan



Lodge Way, Ashford, TW15 3AH

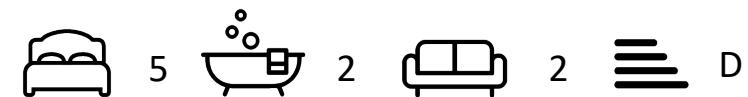
Total Area: 1540 ft² ... 143.1 m²

All measurements are approximate and for display purposes only



Features

- Large semi-detached family home
- Five bedrooms including a large ground floor bedroom with cloakroom
- Large open plan kitchen/diner with built in appliances
- Front aspect living room
- Spacious conservatory to the rear
- Master bedroom with en-suite
- Further family bathroom
- No onward chain



Tenure - Freehold Council Tax Band - D

Aspen Residential Services
 77 Church Road, Ashford, Surrey, TW15 2PE
 Tel: 01784 252 202
 Email: enquiries@aspensalesandlettings.com

