



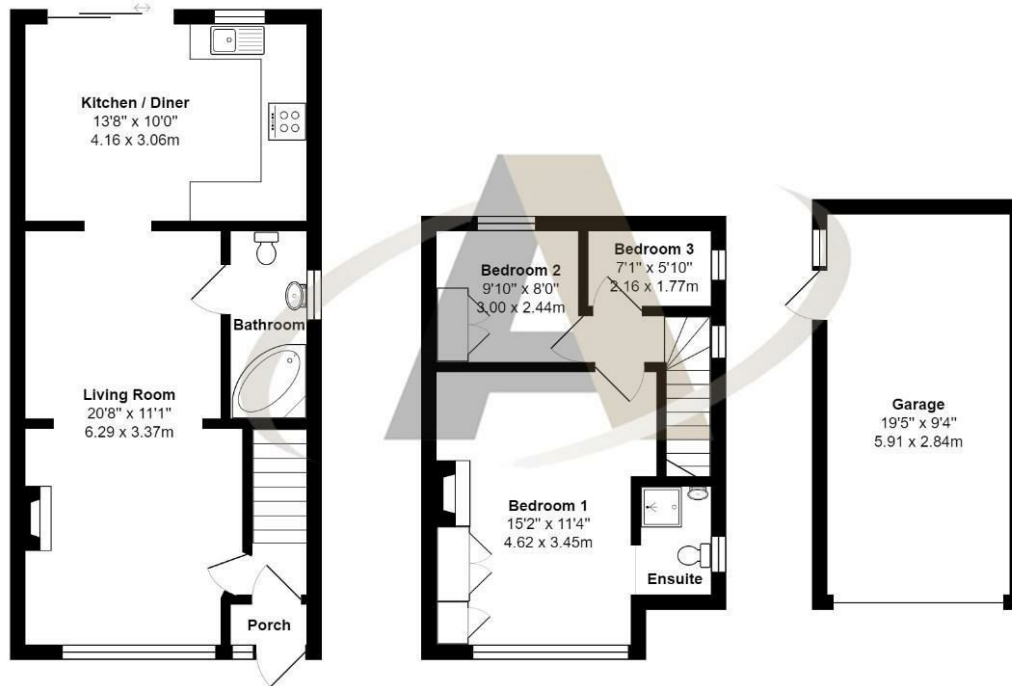


## 33 Harrow Road, Feltham, TW14 8RT

This three bedroom semi detached house is situated at the end of a cul-de-sac with stunning views to the rear of lakes. Accommodation comprises of living room, dining area and three bedrooms. Other notable features include, kitchen/diner, family bathroom, en-suite, double glazing, gas central heating, driveway parking, detached garage and private enclosed rear garden with views over lakes. The property also benefits from having good local road links to the M25, M4, M3 and offers superb access to Heathrow airport.



## Floor Plan



Harrow Road, Ashford, TW14 8RT

Total Area: 922 ft² ... 85.7 m²

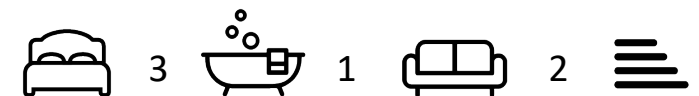
All measurements are approximate and for display purposes only



## Features

- Three Bedrooms
- Kitchen/Diner
- Garage & Driveway Parking
- Cul De Sac Location
- Living Room
- Family Bathroom
- Views Of Lakes To Rear
- Potential To Extend (stpp)

Aspen Residential Services  
77 Church Road, Ashford, Surrey, TW15 2PE  
Tel: 01784 252 202  
Email: [enquiries@aspensalesandlettings.com](mailto:enquiries@aspensalesandlettings.com)



Tenure - Freehold Council Tax Band - D



