



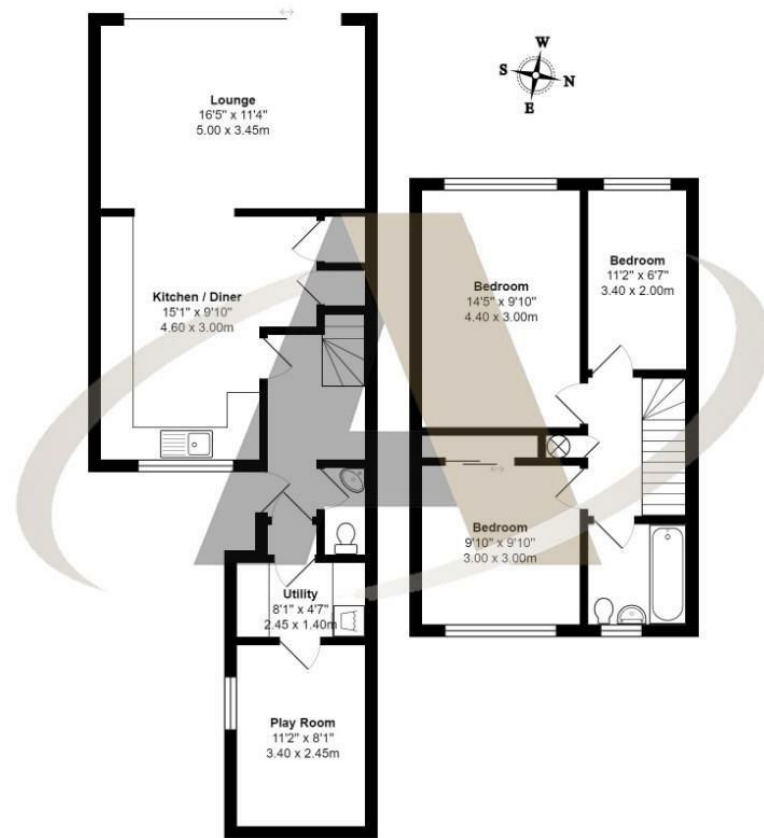


## 55 Hetherington Road, Shepperton, TW17 0SL

Aspen Residential are delighted to introduce this well presented end of terrace house in Charlton Village, Shepperton. Hetherington Road is a popular residential location offering easy access to many of the areas local amenities and the popular schools of Shepperton, Ashford and Sunbury. This three bedroom house is presented in move in condition and consists of generous kitchen / diner to the front of the house and a large lounge to the rear. The lounge has glass, sliding doors onto the westerly facing rear garden. The garden has a decking area, lawn of artificial grass and attractive borders. Upstairs there are three bedrooms and a modern family bathroom. The current owners have converted the garage to create a utility area and useful play room / study.



## Floor Plan



Hetherington Road, Shepperton

Total Area: 1054 ft<sup>2</sup> ... 97.9 m<sup>2</sup>

All measurements are approximate and for display purposes only



## Features

- Family Home
- West Facing Garden
- Convenient for Schools
- Decked Patio Area
- AVAILABLE 1st September 2021
- Three Bedrooms
- Large Kitchen / Diner
- Village location between Shepperton, Ashford & Sunbury
- Rear Aspect Lounge
- UNFURNISHED

Aspen Residential Services  
77 Church Road, Ashford, Surrey, TW15 2PE  
Tel: 01784 252 202  
Email: [enquiries@aspensalesandlettings.com](mailto:enquiries@aspensalesandlettings.com)



Tenure - Council Tax Band -



