



43 Lindsay Close, Staines-Upon-Thames, TW19 7LF

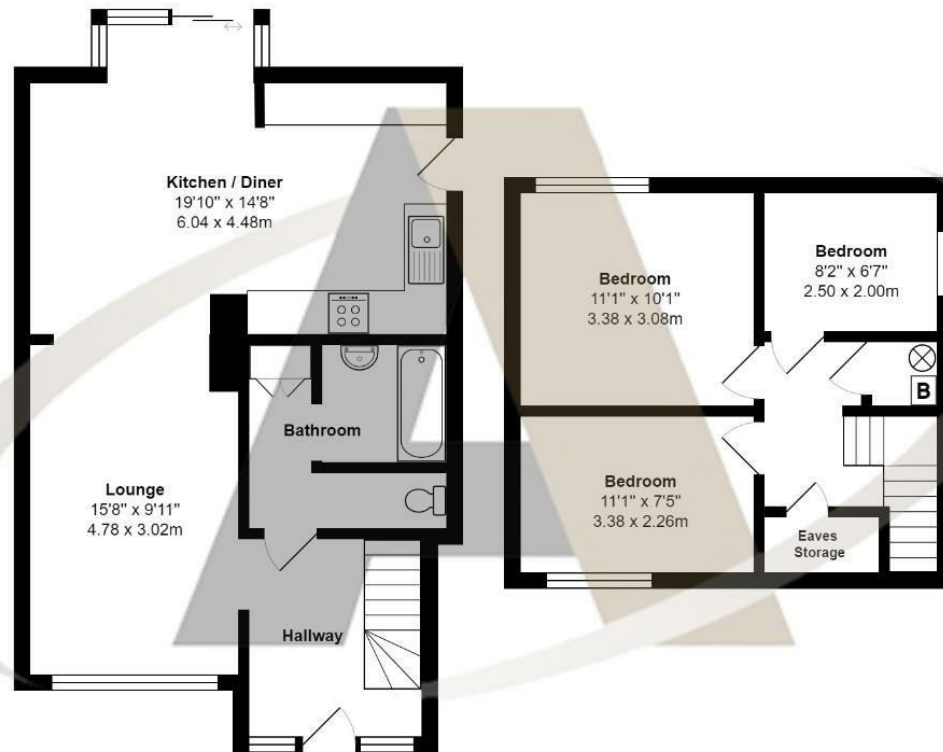
Offers Over £485,000

43 Lindsay Close, Staines-Upon-Thames, TW19 7LF

Aspen Estate Agents are delighted to introduce this lovely three-bedroom semi-detached house to the market. Situated in the ever-popular cul-de-sac Lindsay Close this property should be seen to be appreciated. This freehold house has a large garden with scope to extend in a number of ways (subject to normal consent) The current accommodation comprises Three bedrooms, a large reception room, a modern kitchen, and bathroom with a separate WC. Outside this property has a large garden to the rear, a front garden with off-road parking, and a detached garage with storage area. This property is likely to attract a lot of attention and prompt viewings are encouraged.



Floor Plan



Lindsay Close, Stanwell

Total Area: 951 ft² ... 88.3 m²

All measurements are approximate and for display purposes only



Features

- 3 Bedroom Semi Detached House
- Cul-de-Sac Location
- Scope for Extension
- Large Garden
- Detached Garage
- Off Road Parking
- Modern Kitchen
- Prompt Viewings Encouraged

