



7, Oak House Kenilworth Road, Ashford, TW15 3FB

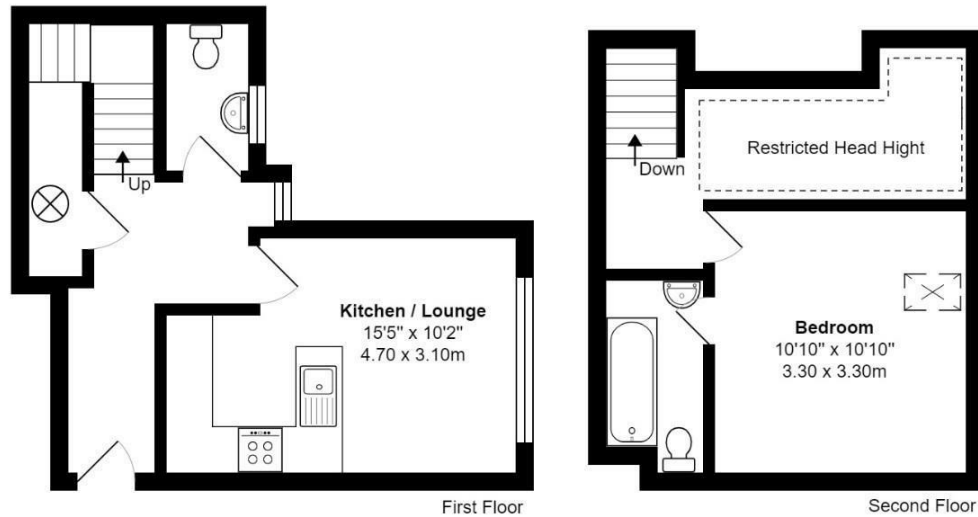
£1,300 Per Calendar Month

7, Oak House Kenilworth Road, Ashford, TW15 3FB

Aspen Residential are delighted to bring to the market a rarely available split-level flat situated to the rear of this gated development in a popular residential area in Ashford, within easy reach of the town centre, bus routes, and the station. This one-bedroom flat benefits from an open plan kitchen/lounge with fitted appliances, a downstairs cloakroom, and stairs leading up to a double bedroom with an en suite bathroom. The development is set in its own secure gated grounds with allocated parking and an entry phone system. AVAILABLE 25TH JUNE on an UNFURNISHED basis.



Floor Plan



Oak House, Kenilworth Road, Ashford

Total Area: 562 ft² ... 52.2 m²

All measurements are approximate and for display purposes only



Features

- Split Level Apartment
- Open Plan Lounge/Kitchen
- En-Suite Bathroom
- Gated Development
- UNFURNISHED
- Double Bedroom
- Cloakroom
- Communal Gardens
- Secure Entry
- AVAILABLE 1st September 2021

