



13 Kingsbury Drive, Old Windsor, SL4 2NQ

£495,000



# 13 Kingsbury Drive, Old Windsor, SL4 2NQ

This excellent sized and well maintained 3 bedroom house will tick a lot of boxes for most buyers.

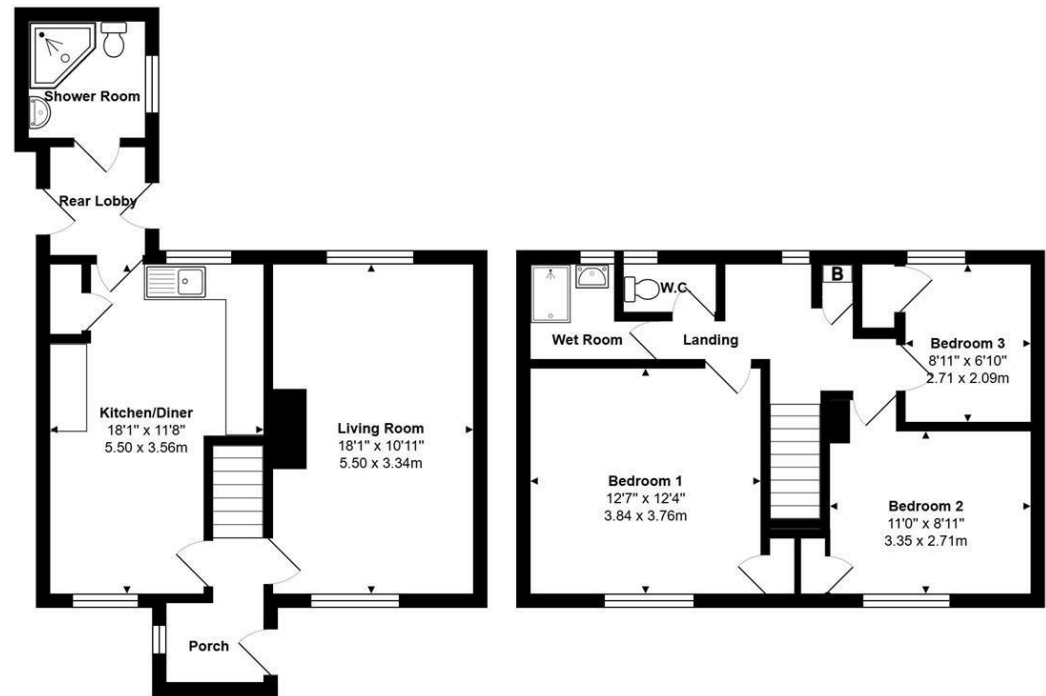
First it is well located, within a very short walk of Kings Court first school and St Peter's C of E middle school. Private schooling can also be found at St Johns Beaumont and Bishopsgate. The medical center is close to hand and walks along the River Thames and Windsor Great Park can be easily reached and the M25 & M4 are within around a 10 minute drive.

The accommodation comprises entrance hall, living room, kitchen/diner and rear lobby with ground floor shower room off it, whilst upstairs is a further wet room and the three bedrooms with the principal room being a very large double. There is a gas central heating system to radiators and double glazed windows.

Outside is a large garden to the rear, which has lots of space for a large extension, subject to any relevant planning permission/building regulation approval, whilst the front provides off street parking for two cars. EPC Rating: TBC.



Floor Plan

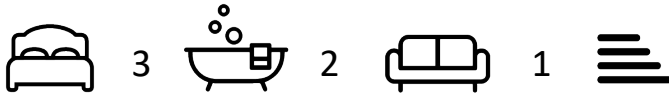


Total Area: 1015 ft² ... 94.3 m²



Features

10 St Judes Road, Englefield Green, Surrey TW20 0BY  
Tel 01784 433696  
sales@aspennestateagents.co.uk



Tenure - Freehold Council Tax Band - D



