



15 Runnemeade Road, Egham, TW20 9BE

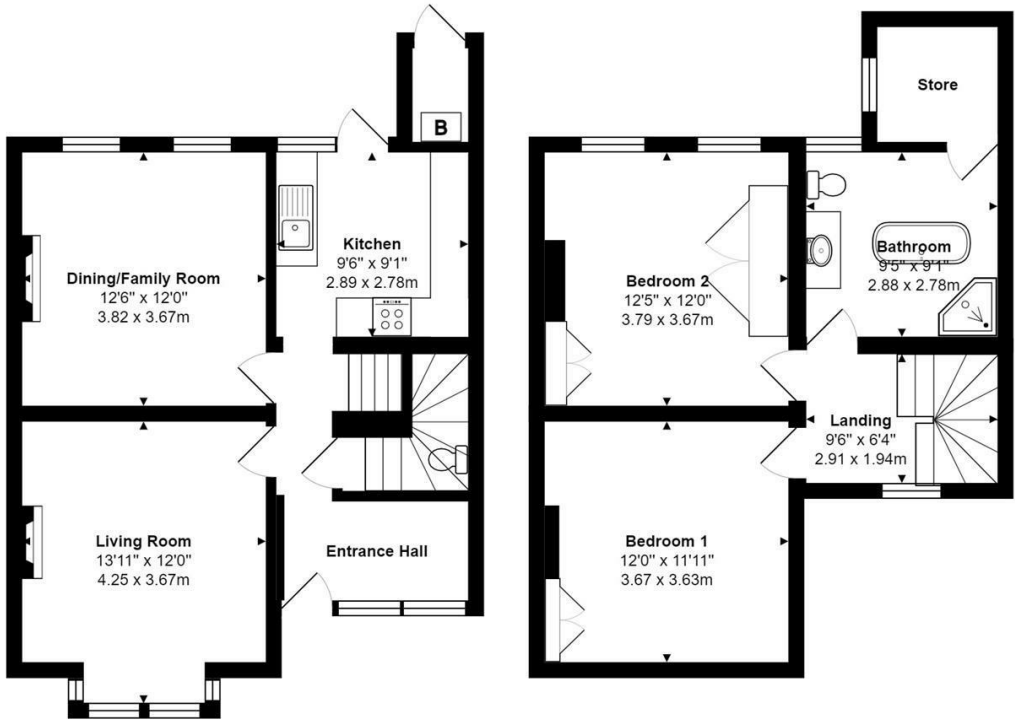
£1,850 Per Calendar Month

15 Runnemedede Road, Egham, TW20 9BE

This stunning semi-detached 'halls adjoining' Victorian villa has been well maintained by the current owner/landlord who lived here as a family home. It offers excellent sized and well laid out accommodation to include an entrance hall, two grand reception rooms with high corniced ceilings, with the living room having a wide bay window to the front, and the family room having a marble & cast iron fireplace and two sash windows overlooking the rear garden. The lovely country cottage style kitchen is well fitted with appliances and also has access onto the rear garden. There is a landing with window, two great double bedrooms with high ceilings and fireplaces, and a large upstairs bath/shower room with small storage room off it. The rear garden is a good size and there is gas central heating to radiators and the windows are double glazed. EPC Rating: D.



Floor Plan



Features

