



32a Woodthorpe Road, Ashford, TW15 2RU

£1,500 Per Month

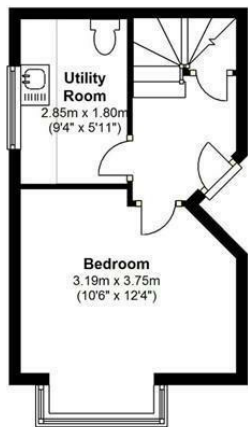
32a Woodthorpe Road, Ashford, TW15 2RU

this spacious two double bedroom split level maisonette is located a three minute walk from Ashford's train station and town centre. On the ground floor this well presented property offers a double bedroom and utility/cloakroom. On the first floor there is a living room, modern kitchen, bathroom and further double bedroom. Outside there is a garden area and two parking spaces.

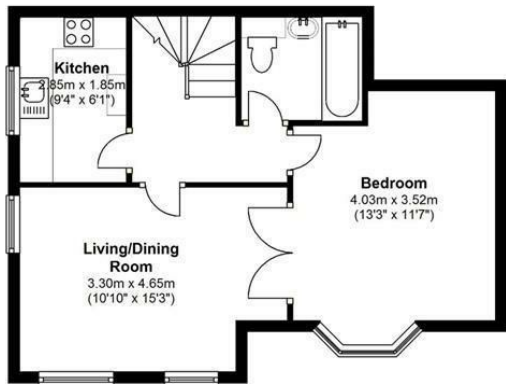


Floor Plan

Ground Floor
Approx. 27.4 sq. metres (294.5 sq. feet)



First Floor
Approx. 43.1 sq. metres (463.8 sq. feet)



Total area: approx. 70.4 sq. metres (758.3 sq. feet)



Features

- Split Level Maisonette
- Modern Kitchen
- Walk to the Station
- Utility Room with Cloakroom
- AVAILABLE DECEMBER 2025
- Spacious Reception Room
- Allocated Parking
- Two Double Bedrooms
- UNFURNISHED

10 St Judes Road, Englefield Green, Surrey TW20 0BY
Tel 01784 433696
sales@aspenestateagents.co.uk

 2

 0

 0

 C

Tenure - Council Tax Band - D

