

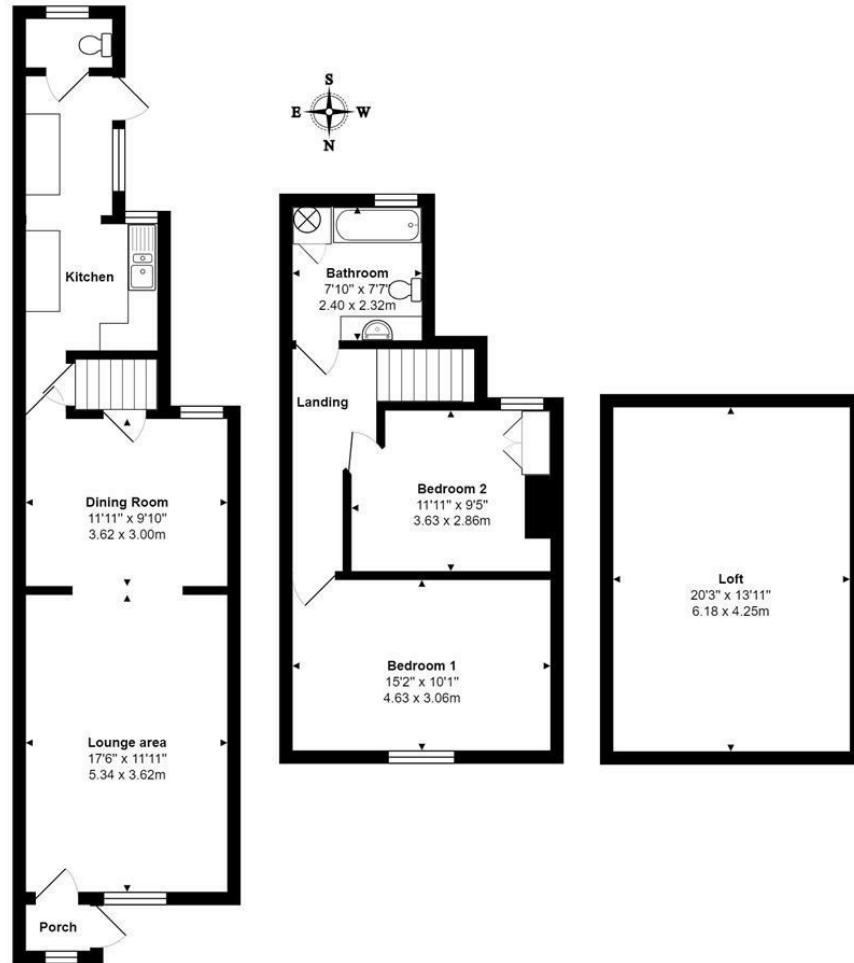


4a South Road, Englefield Green, TW20 0RL

This spacious terrace house is steeped with character and offers an exciting opportunity for someone that is looking for a project as the house is in need of full modernisation. There is a private Southerly aspect rear garden and off road parking for one car. There is a large lounge & dining room, kitchen, downstairs cloakroom, two double bedrooms and a first floor bathroom. The loft is huge, as can be seen from the floor plan, with a 16' pitch, with the neighbouring property having created a large bedroom with en suite and mezzanine study. EPC Rating: D.



Floor Plan



Features

10 St Judes Road, Englefield Green, Surrey TW20 0BY
Tel 01784 433696
sales@aspeneagents.co.uk

