

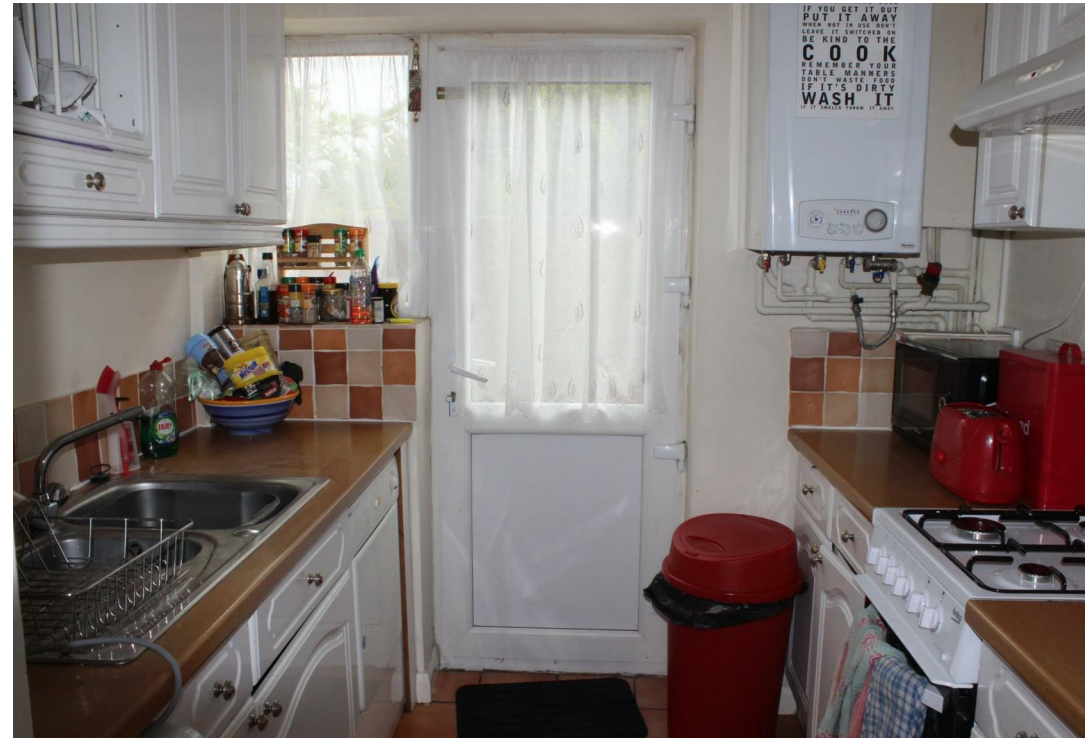


17 Cusack Close, Twickenham, TW1 4TB

£1,650 PCM

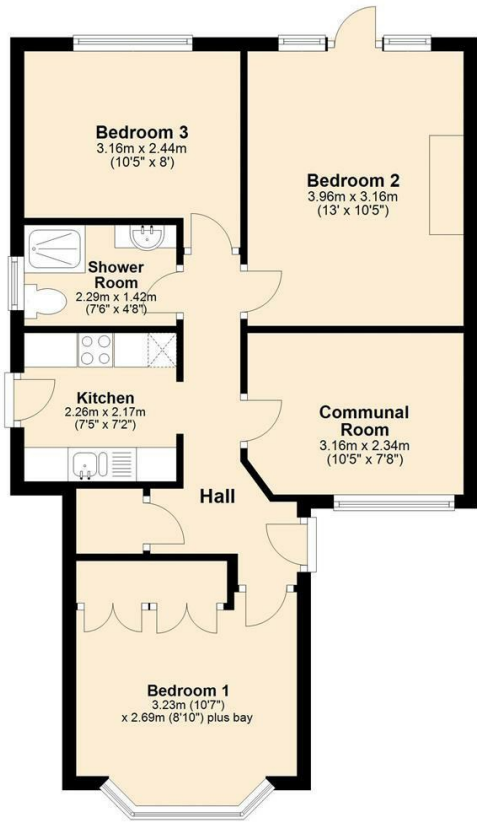
17 Cusack Close, Twickenham, TW1 4TB

This 3 bed ground floor Student Let maisonette, which has its own entrance, garden and shed, is situated just a very short walk to St Marys University. There is a small living room, kitchen and bathroom. Available for a 12 month contract from 30th August 2023. EPC Rating D.



Floor Plan

Ground Floor
Approx. 55.0 sq. metres (591.7 sq. feet)



Features

