



44 Beechtree Avenue, Englefield Green, TW20 0SR

£375,000

44 Beechtree Avenue, Englefield Green, TW20 0SR

INVESTMENT BUYERS ONLY. An amazing opportunity to purchase this Three Double Bedroom Student Investment House, situated in a quiet road of similar houses and let out until 29th August 2026 at £2,100pcm.

The accommodation comprises an entrance hall, large double bedroom on the ground floor, modern fitted open plan kitchen/living room with access onto the rear garden. Upstairs are two further double bedrooms and a modern shower room with separate w.c. There is a gas central heating system to radiators, double glazing and a small, secluded rear garden.

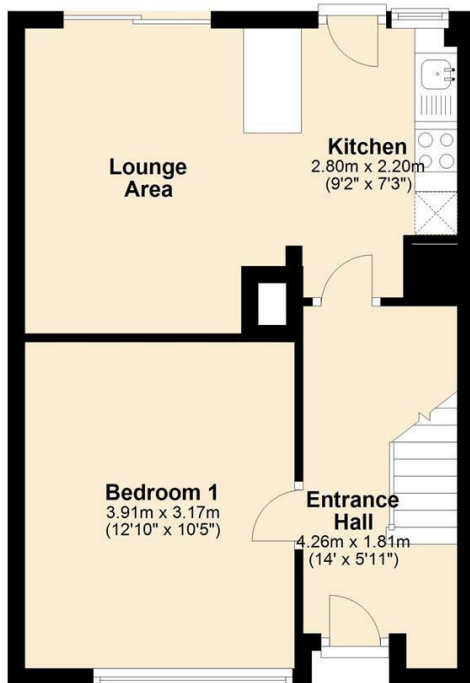
Aspen Estate Agents have been lucky to have let this property out for around 20 years and it has always been one of those very popular houses with the students, particularly as the bedrooms are all excellent doubles. Energy Rating: C.



Floor Plan

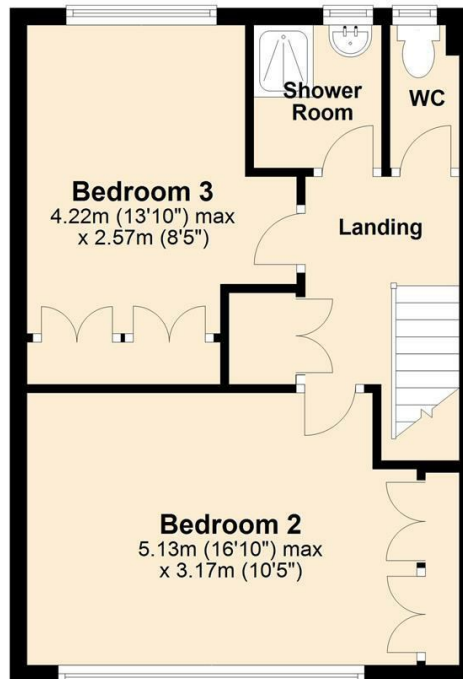
Ground Floor

Approx. 28.1 sq. metres (302.5 sq. feet)



First Floor

Approx. 38.3 sq. metres (412.5 sq. feet)



Features

- Great Investment Opportunity
- Let at £2,100pcm
- Three Double Bedrooms
- Open Plan Living Room
- Double Glazing
- Student Rental
- Until 29th August 2026
- Modern Fitted Kitchen
- Gas Central Heating
- Modern Shower Room

10 St Judes Road, Englefield Green, Surrey TW20 0BY
Tel 01784 433696
sales@aspenestateagents.co.uk



Tenure - Freehold Council Tax Band - D

