



109 Wraysbury Road, Staines, TW18 4UA

This beautifully presented Edwardian semi-detached house is situated opposite Lammas Park and within a convenient 10-15 minute stroll to Staines' vibrant High Street, the bustling Two Rivers shopping development and the tranquil expanse of Staines Moor.

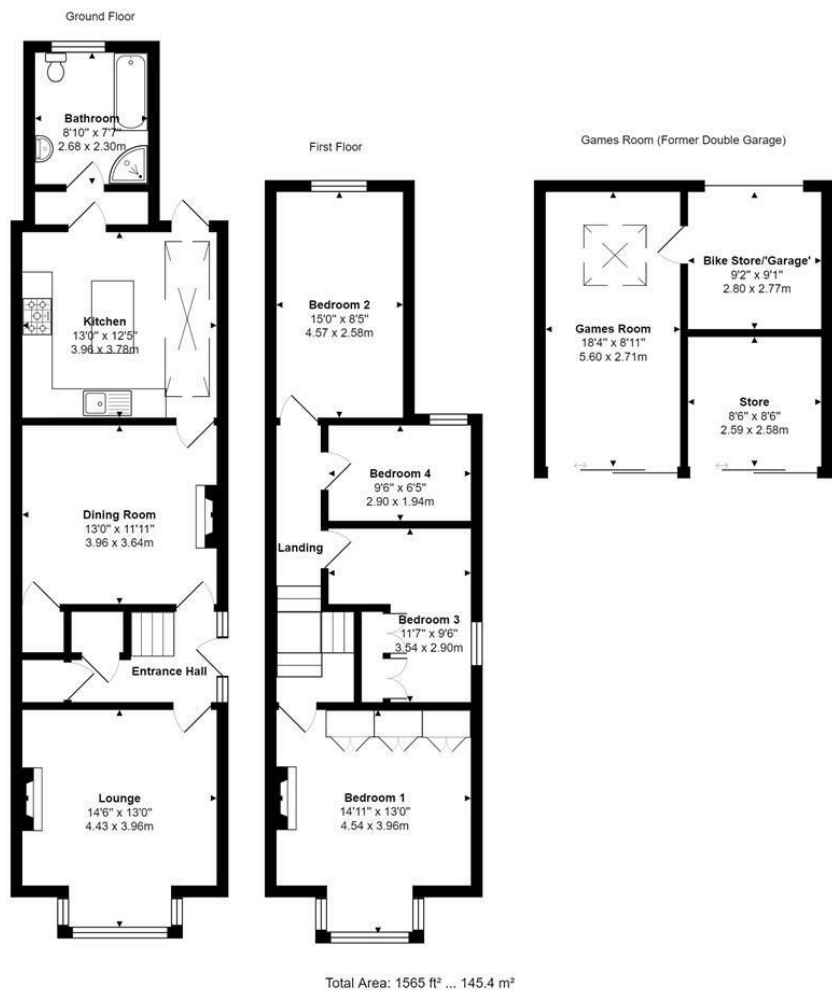
The property welcomes you with a grand entrance hall, leading to an elegant living room with large sash bay windows that flood the space with natural light. A separate dining room provides a perfect setting for family meals, while the well-appointed kitchen/breakfast room is ideal for casual dining. The ground floor also boasts a generously sized bathroom.

Upstairs, you'll find four spacious bedrooms, offering flexibility for various needs. One of the bedrooms holds the potential for conversion into an additional bathroom, enhancing the home's functionality.

The exterior features off-road parking at the front, while the rear garden is a delightful retreat, complete with a detached games room and ample storage, converted from a former double garage. The property is presented in excellent decorative condition, maintaining its period charm while offering modern comforts. This really is a must see property! EPC Rating: E.



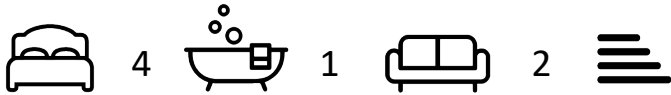
Floor Plan



Features

- Edwardian Semi-Detached House
- Grand Entrance Hall & Staircase
- Dining Room
- Large Downstairs Bathroom
- Lovely Rear Garden
- Four Bedrooms
- Living Room
- Kitchen/Breakfast Room
- Off Road Parking
- Detached Games Room

10 St Judes Road, Englefield Green, Surrey TW20 0BY
Tel 01784 433696
sales@aspenestateagents.co.uk



Tenure - Freehold Council Tax Band -

