



50a Gloucester Crescent, Staines-Upon-Thames, TW18 1PS

£1,300 Per Calendar Month



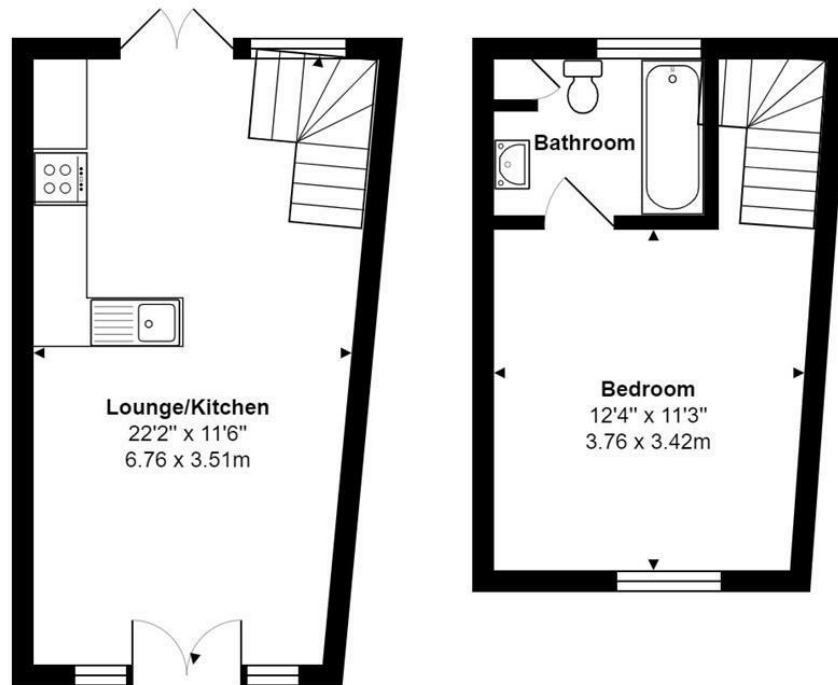
## 50a Gloucester Crescent, Staines-Upon-Thames, TW18 1PS

This one bedroom end terrace house is situated close to the Staines/Laleham/Ashford borders and benefits from a gas central heating system to radiators, double glazed windows and a small courtyard garden. There is a good size open-plan living room/kitchen with easy to maintain tiled floor and fitted white goods on the ground floor, whilst on the first floor is the double bedroom with a 3 piece bathroom suite, with shower over bath. The property is ideal for a single person or couple.

EPC Rating: C.



## Floor Plan



Total Area: 462 ft² ... 42.9 m²



## Features

- One Bedroom House
- Open-Plan Lounge/Kitchen
- En Suite Bathroom
- Double Glazed Windows
- Unfurnished
- End of Terrace
- Large Double Bedroom
- Gas Central Heating
- Courtyard Garden

