



8 Saville Place 65 Victoria Street, Egham, TW20 0AW

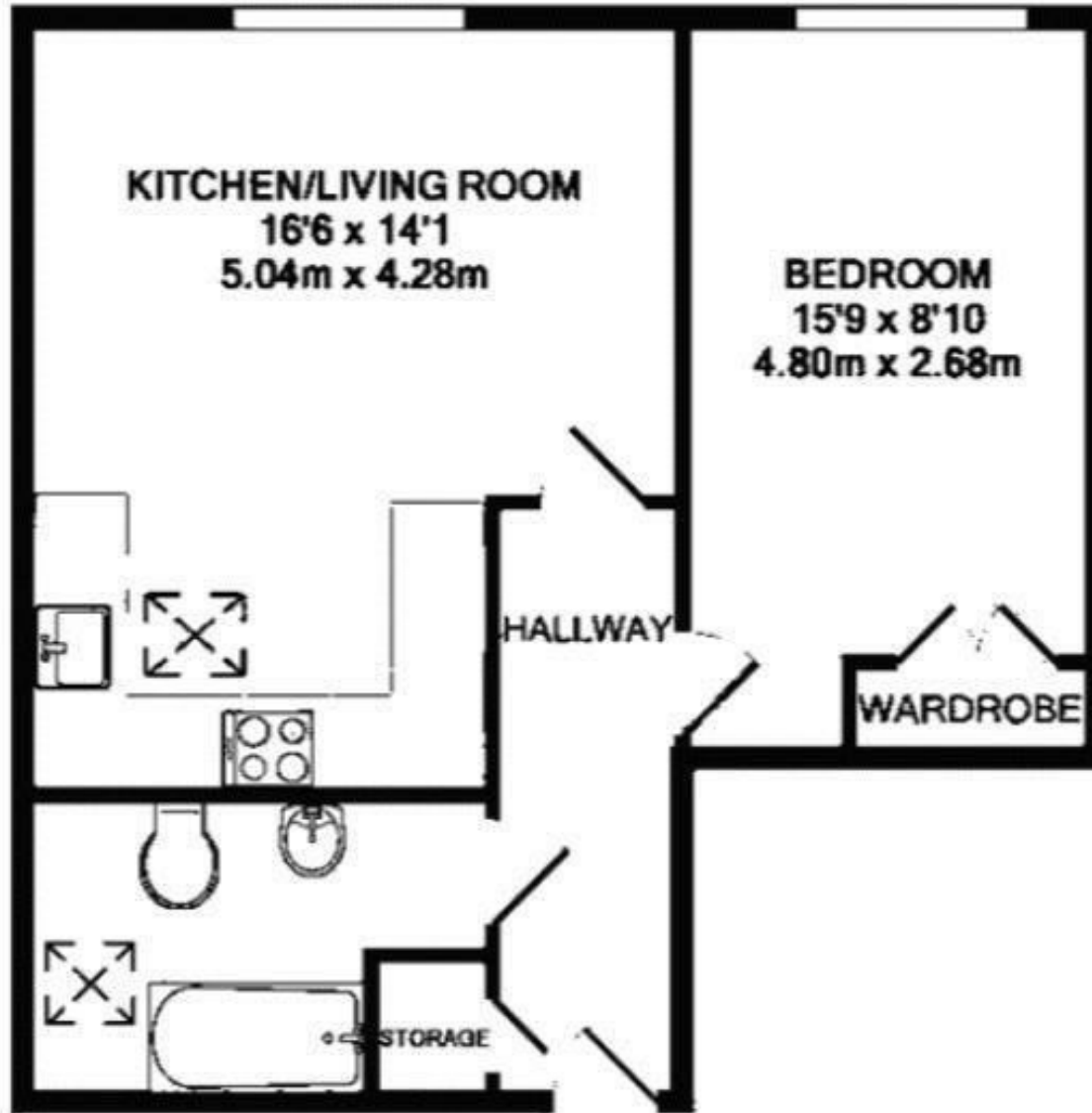
£1,300 PCM

8 Saville Place 65 Victoria Street, Egham, TW20 0AW

A one bedroom student apartment is situated in one of the newest and most popular apartment buildings in the area, just a 5 minute walk to Royal Holloway University. There is a open plan kitchen/living room with integrated appliances, double bedroom, modern bathroom, off-street parking, double glazing and under-floor heating. EPC Rating: B.

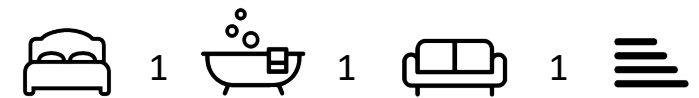


Floor Plan



Features

10 St Judes Road, Englefield Green, Surrey TW20 0BY
Tel 01784 433696
sales@aspenestateagents.co.uk



Tenure - Council Tax Band - B

