



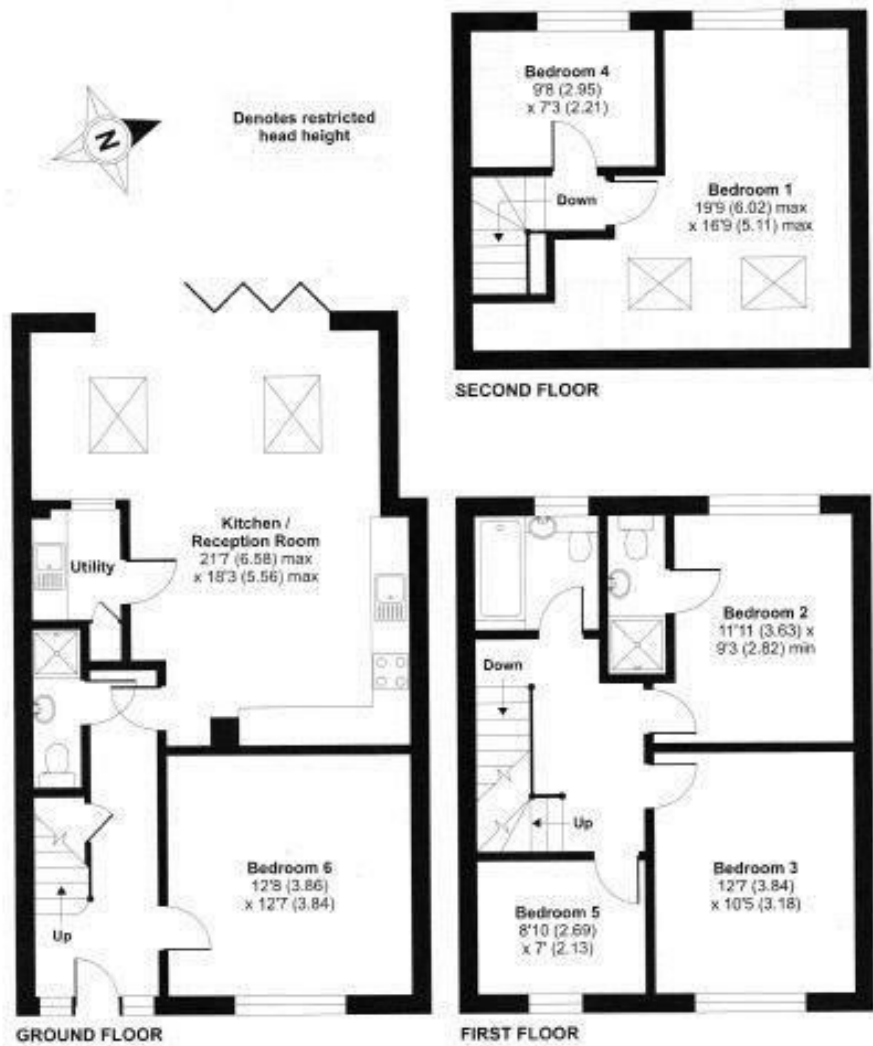
4 The Crescent, Egham, TW20 9PH

Very well presented student property in Egham. The house is ideally situated for the back gate to RHUL and boasts six bedrooms, three bath/shower rooms (one with en-suite), a spacious open plan Lounge/Kitchen/Diner with bi-fold doors onto the rear garden and a utility room. There is also off road parking for two cars and internal inspection is highly recommend to fully appreciate the property. Furnished to a high standard and managed by an experienced local landlord. EPC Rating: D.



Floor Plan

APPROX. GROSS INTERNAL FLOOR AREA 1428 SQ FT 132.6 SQ METRES (EXCLUDES RESTRICTED HEAD HEIGHT)



Features

