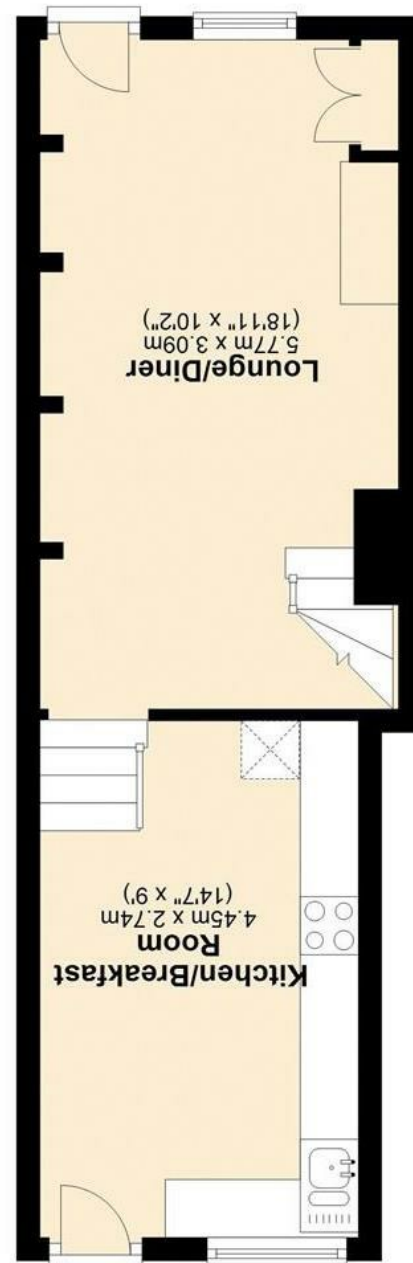
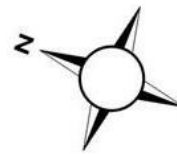




Approx. 30.3 sq. metres (325.8 sq. feet)



Approx. 30.3 sq. metres (326.2 sq. feet)







11 Harvest Road, Englefield Green,  
Surrey, TW20 0QS

This attractive two double bedroom end of terrace Victorian cottage is situated on a popular road within walking distance of the village shops. The property comprises a living/dining room with wooden flooring and a gorgeous open brick fireplace, fitted kitchen/breakfast room, two double bedrooms and an upstairs shower room. The property also benefits from a gas central heating system to radiators, double glazed windows and a good size rear garden. No Chain. EPC Rating: D.

EPC Rating

Council Tax Band D

Freehold

