



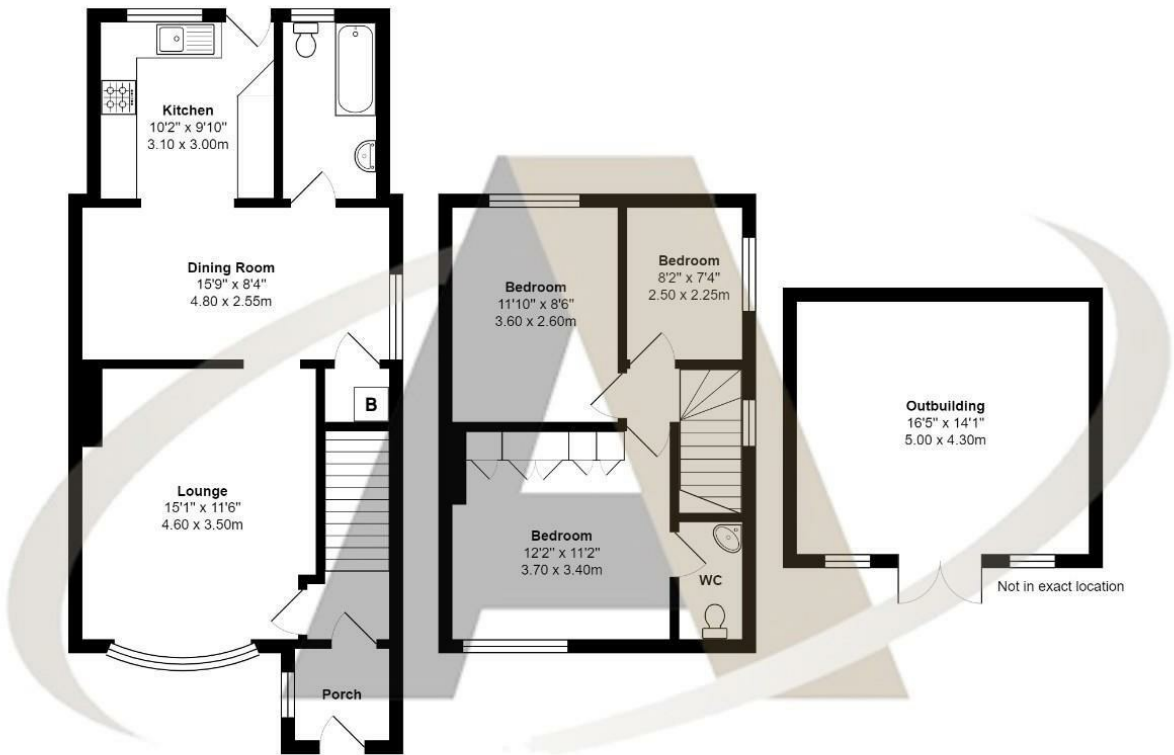


## 33 Portland Road, Ashford, TW15 3BU

Portland Road, Ashford is a popular residential location offering easy access to many of Ashford popular schools, transport links, and local amenities. This three-bedroom house has just been fully redecorated by the landlord and is available immediately on an unfurnished basis. Accommodation comprises three bedrooms, a large lounge, dining room, bathroom, and good size kitchen. Outside this property has a lovely garden, an outbuilding that would be a perfect playroom or usefull for additional storage and there is off-road parking to the front for multiple vehicles. This property is likely to attract a lot of attention. Call Aspen Estate Agents to book your viewing.



Floor Plan



Portland Road, Ashford

Total Area: 1225 ft² ... 113.8 m²

All measurements are approximate and for display purposes only



Features

- 3 Bedrooms
- 2 Reception Rooms
- Outbuilding with power
- Unfurnished
- Semi-Detached House
- Good Size Garden
- Available Now
- No Pets



