





# Fairfield Tite Hill, Englefield Green, TW20 0NJ

This most attractive 5 bedroom 1935 built detached house is situated on ever-popular Tite Hill, on a lovely plot in the region of a third of an acre. It is nicely set back from the road, with the advantage of a 200'+ rear garden, plenty of off road parking and a garage.

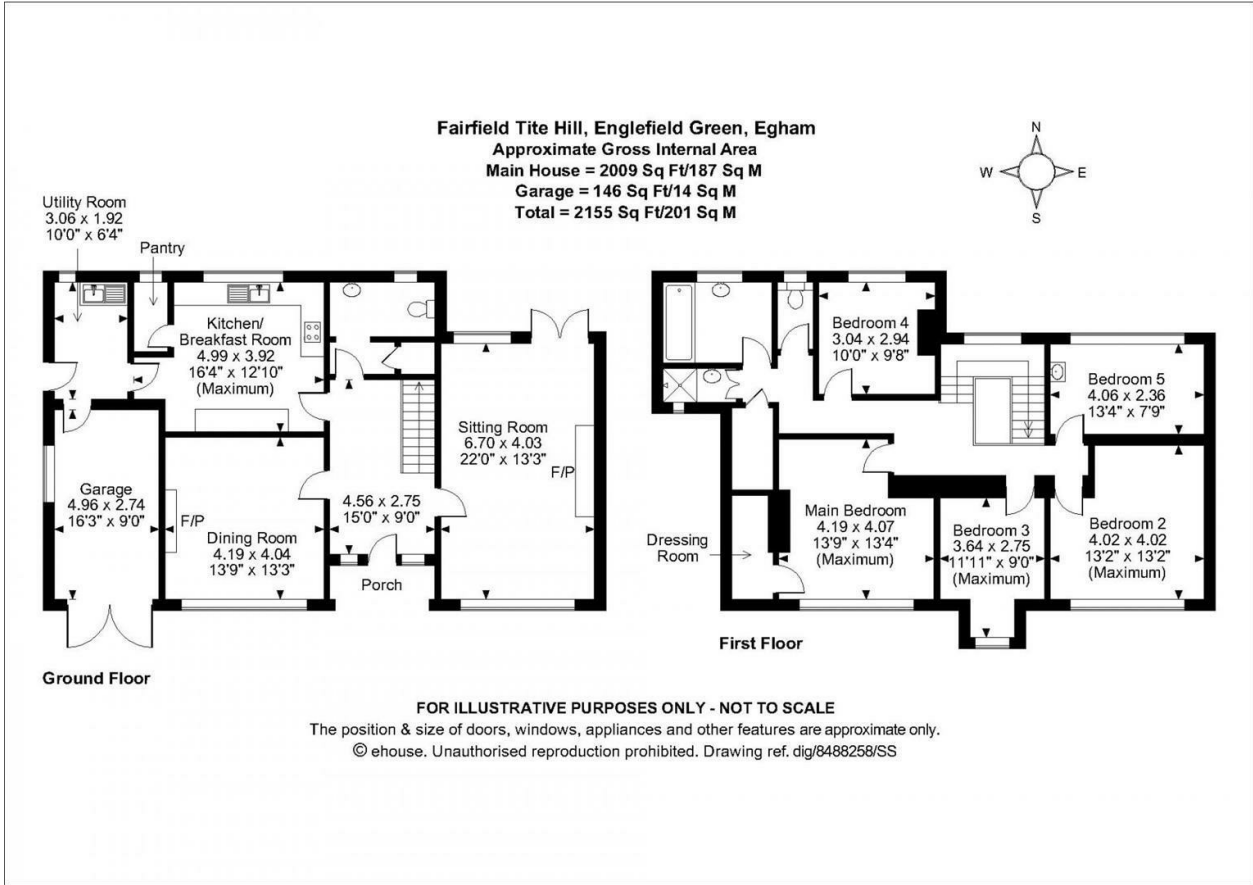
There are many original features including solid wood herringbone floor throughout most of the ground floor, fireplaces, Crittall windows and a wood panelled dog-leg staircase. The property has been well-maintained yet still offers huge scope for further improvement and extension.

The house is within walking distance to the village green and shops and has open spaces for walking on hand in nearby Windsor Great Park, Runnymede and the River Thames. It enjoys excellent links to London, the M4, M25 and M3 and is only 40 minutes to London by train, with easy connections to Reading and the motorway network.

EPC Rating: D.



Floor Plan



Features



