



21 Pond Road, Egham, TW20 8BG

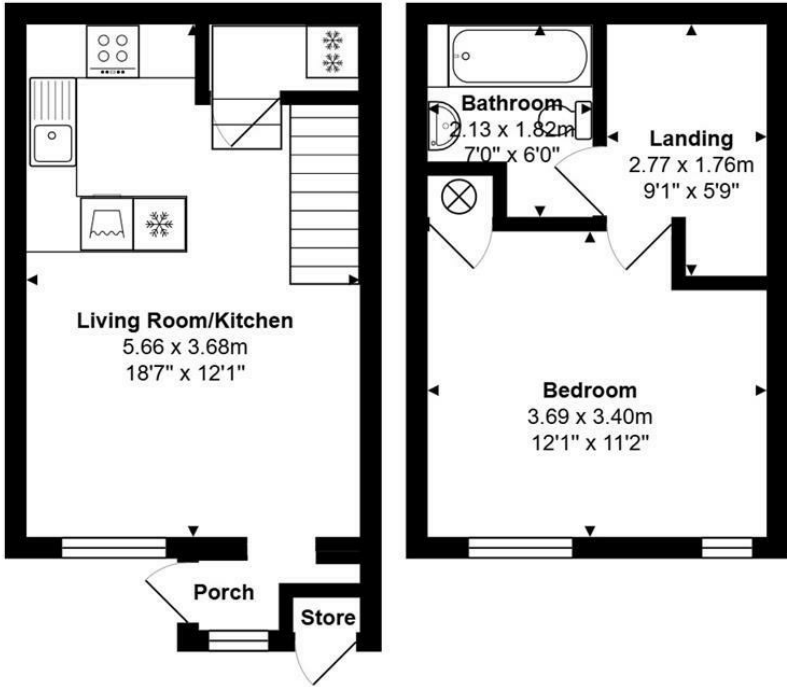
£1,300 Per Calendar Month

21 Pond Road, Egham, TW20 8BG

This recently redecorated one bedroom starter home has been fully refurbished to an excellent standard, recently decorated in modern greys and whites to feel bright and airy. It is located in Egham, within easy access to the local shops, junction 13 of the M25 motorway and approximately equidistant of Staines and Egham Town Centres, with their train stations, on the Waterloo line. The lovely living room is open plan to the well-fitted kitchen with nearly new appliances. Upstairs, off the landing, is a large double bedroom with storage and a white bathroom suite presented to a high standard with overhead shower. There is a small front garden and off road parking. EPC Rating: D.



Floor Plan



Total Area: 43.8 m² ... 472 ft²



Features

