



1b Blays Close, Englefield Green, TW20 0PE

£285,000

1b Blays Close, Englefield Green, TW20 0PE

Welcome to this charming INVESTMENT property. Situated close to the university, this property is currently let to two students students, with a tenancy in place until the summer of 2026 at £1,500pcm.

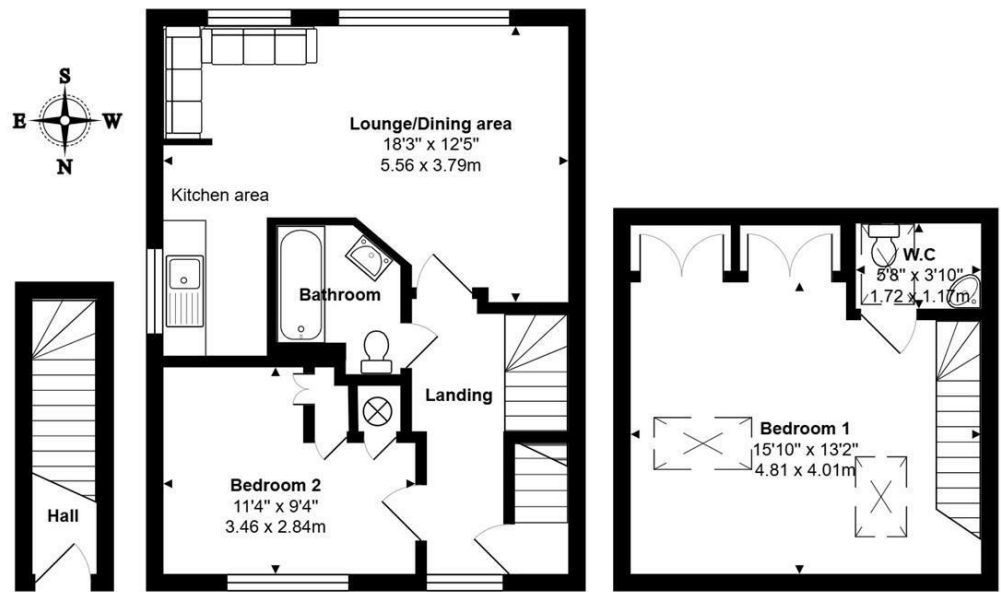
It is a two bedroom split-level maisonette located in Blays Close, Englefield Green. The majority of the accommodation is situated on the first floor approached via its own front door and staircase on the ground floor. The large reception room has a sunny south aspect, allowing light to flood in, with a small kitchen area set back from it. There is also a double bedroom and bathroom on the first floor, with a further staircase to the second floor and the second double bedroom.

One of the standout features is the private garden along the side and front and with parking always a premium, fear not, as this maisonette comes with off road parking for one vehicle.

EPC Rating: D.



Floor Plan



Total Area: 735 ft² ... 68.3 m²



Features

- Split-Level Maisonette
- Two Double Bedrooms
- Fitted Kitchen
- Gas Central Heating
- 1 Parking Space
- Private Garden!
- Large Living Room
- White Bathroom Suite
- Double Glazing
- Great FTB or Investment

10 St Judes Road, Englefield Green, Surrey TW20 0BY
Tel 01784 433696
sales@aspenestateagents.co.uk



Tenure - Leasehold Council Tax Band - C

