



32a St. Judes Road, Egham, TW20 0BY

£1,800 Per Calendar Month

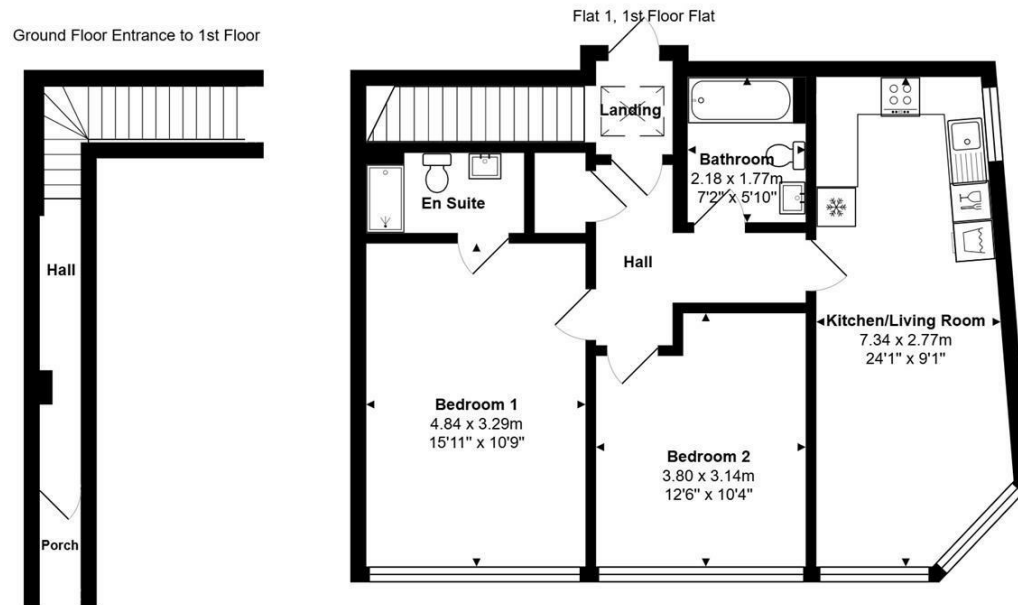
32a St. Judes Road, Egham, TW20 0BY

This spacious two double bedroom, first floor flat is situated at the front of the building with tall double glazed windows in the living room and principal bedroom both of which are overlooking the churchyard. It is centrally located for the village shops and ideal for someone who works at the university, as it is only a 5-6 minute walk. The village green and Windsor Great Park can also be reached in a 5-10 minute walk and Egham's shops and mainline train station are about 1.25 mile away.

The property has just come to the end of a complete refurbishment/conversion programme so it's almost like walking into a brand new property. The gorgeous living room/kitchen has fitted/integrated appliances including oven, hob, washer/dryer, fridge/freezer and dishwasher and there is wood style flooring in the living room/kitchen and bathrooms, with carpeting in the bedrooms. There a gas central heating system to radiators, double glazed windows and one allocated car parking space to the rear.
The property is available in early November 2025. EPC Rating: TBC.



Floor Plan



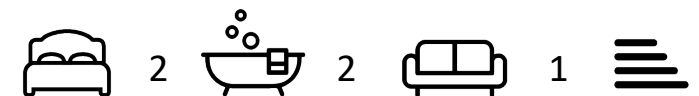
Total Area: 68.3 m² ... 735 ft² (excluding hall, porch)



Features

- First Floor Flat
- En Suite Shower Room
- Stunning Living Room/Kitchen
- Fitted Appliances inc. Dishwasher
- Gas Central Heating
- Two Double Bedrooms
- Further Bathroom
- Allocated Parking For 1 Car
- Double Glazed
- Brand new conversion

10 St Judes Road, Englefield Green, Surrey TW20 0BY
Tel 01784 433696
sales@aspenestateagents.co.uk



Tenure - Council Tax Band -

