



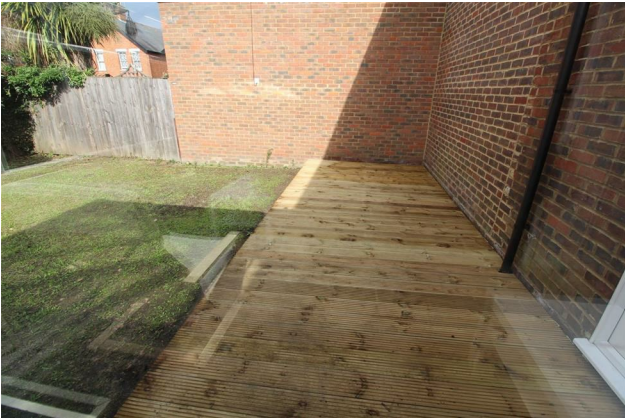
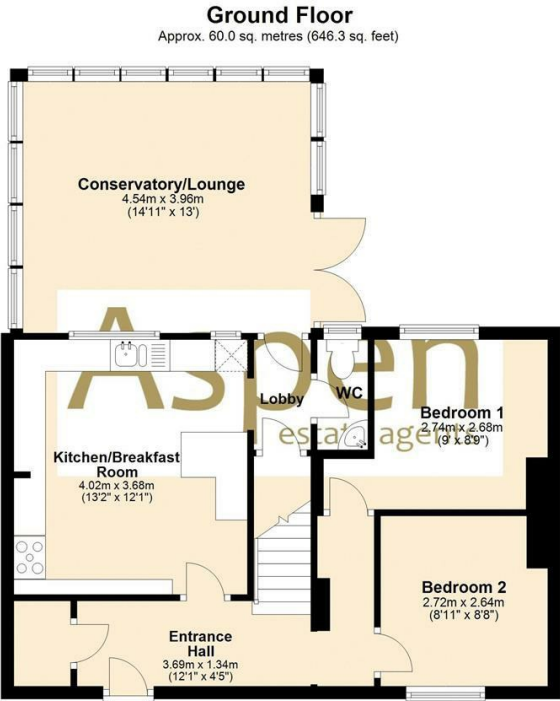


## 109 Spring Rise, Egham, TW20 9PE

GREAT KITCHEN AND LOCATION. A \*five bedroom student let house with a fantastic kitchen/breakfast room with lots of appliances including a 'range cooker'. There is a downstairs cloakroom/w.c. upstairs bathroom, large conservatory/lounge with access onto the decking and small garden area and off street parking on the front. Great Location, near the shops, train station and about 6-7 minutes walk from the back gates of the University. Energy Rating D. Tenancy to run from 24th July 2023 - 13th July 2024.



Floor Plan



Features

- Great Student House

