



11 Tower Court, Vicarage Road, Egham, TW20 9JN

£1,250 Per Month

11 Tower Court, Vicarage Road, Egham, TW20 9JN

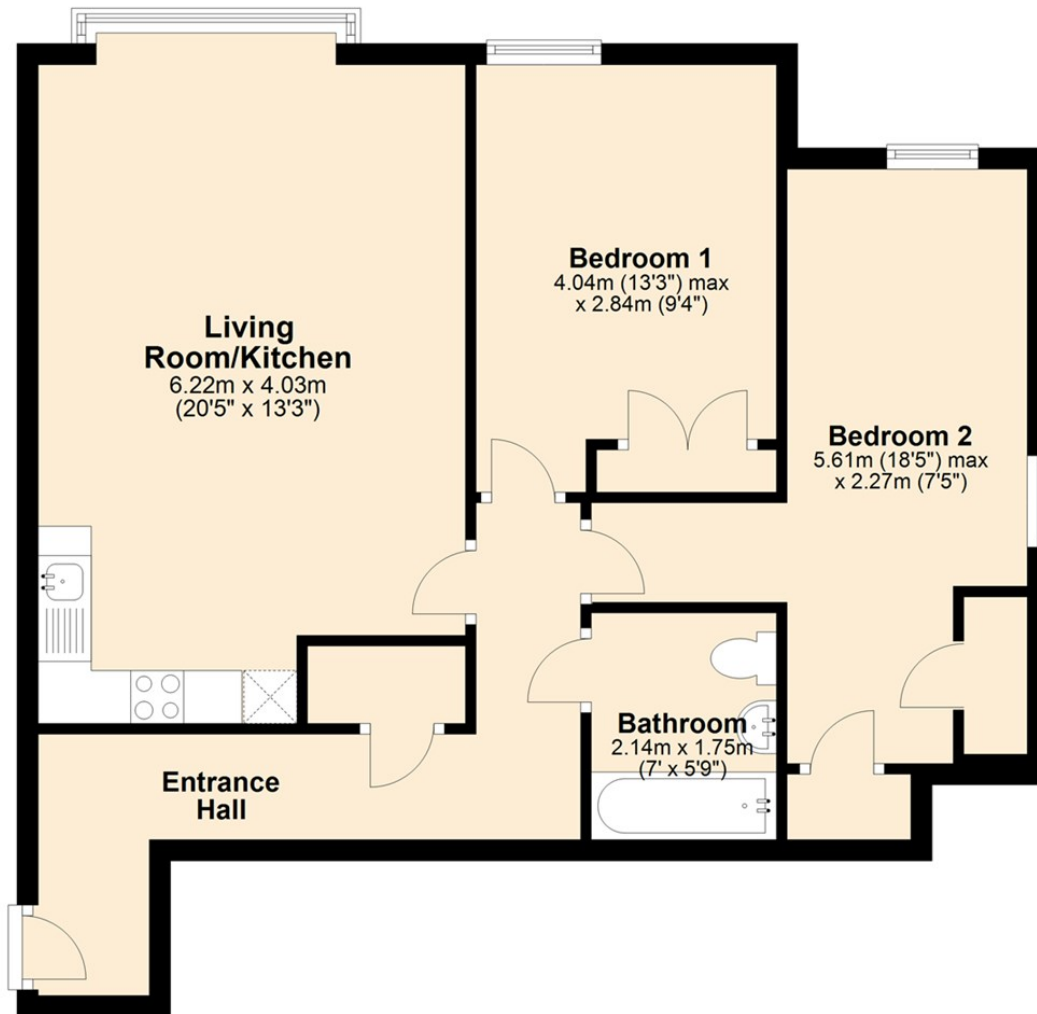
This two double bedroom apartment is situated in a sought-after development in Egham Town Centre - close to all local amenities and train station. There is a large open plan kitchen / living area, bathroom, allocated parking space, and a secure entry system. Available 28th September on an Unfurnished basis.



Floor Plan

First Floor

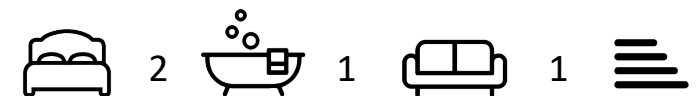
Approx. 68.9 sq. metres (742.0 sq. feet)



Features

- 2 Bedroom Apartment
- Close to Shops and Station
- Modern Kitchen and Bathroom
- Unfurnished
- Egham Town Centre
- Allocated Parking
- Available 28th September 22

10 St Judes Road, Englefield Green, Surrey TW20 0BY
Tel 01784 433696
sales@aspenestateagents.co.uk



Tenure - Council Tax Band -

