



52 Little Heath Road, Chobham, GU24 8RJ

£2,600 Per Month

52 Little Heath Road, Chobham, GU24 8RJ

Available Immediately This charming three-bedroom detached family home enjoys a picturesque setting opposite Little Heath Common. Positioned on a quiet no-through lane, the property provides a wonderful balance of countryside, tranquillity and has convenient access to local amenities.

This well presented home offers a comfortable open plan living space and is just a short walk from Chobham village, tenants can enjoy a selection of pubs, restaurants, and boutique shops.

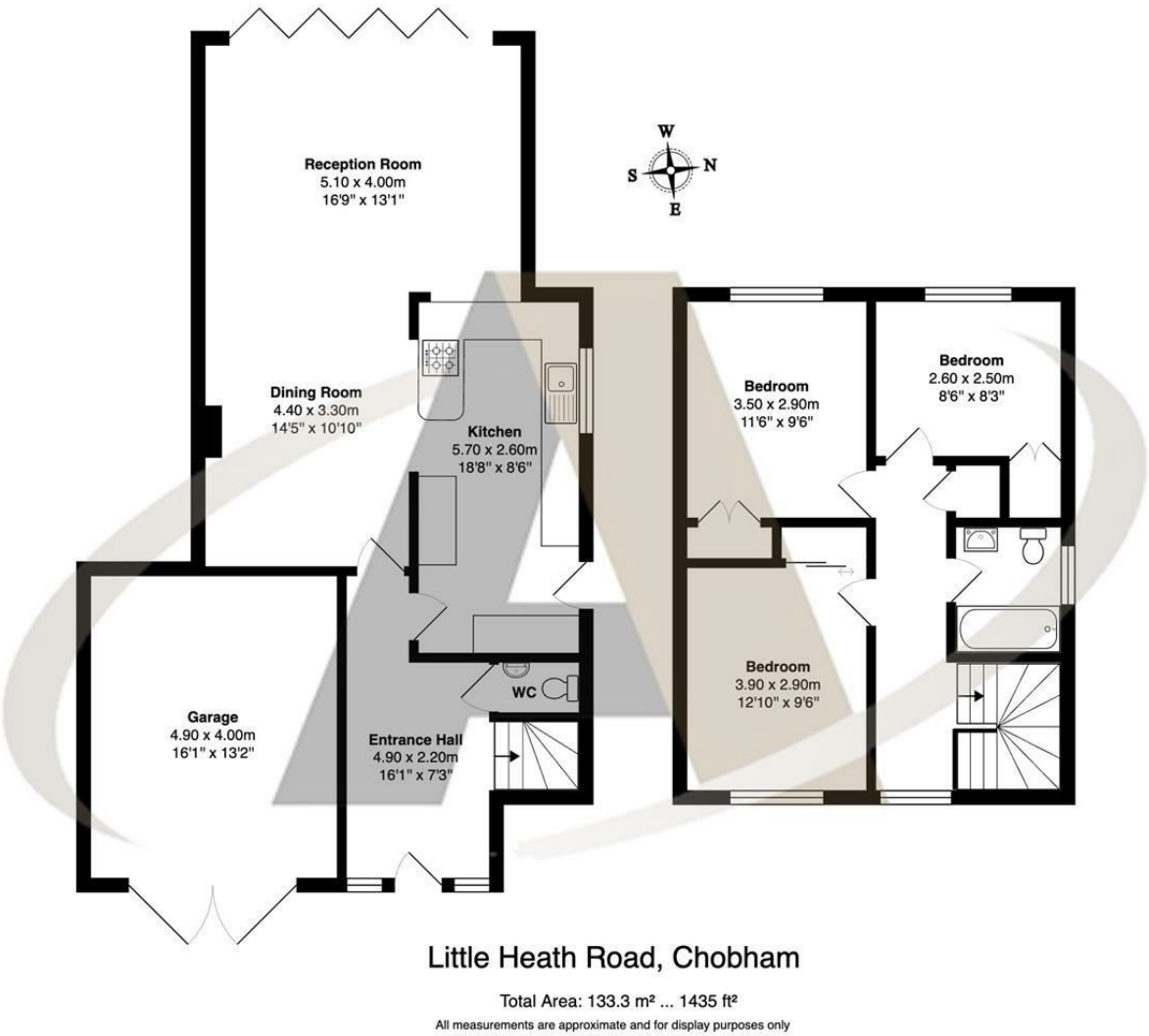
The rear garden is a delight, featuring a large patio with well maintained lawn, bordered by mature shrubs and flowers that create a private and inviting outdoor retreat.

Nature lovers will appreciate the proximity to both Little Heath Common and Chobham Common, with their extensive walking, cycling, and horse-riding trails. This home presents an exceptional opportunity for those seeking a peaceful yet well-connected lifestyle in a highly sought-after location.

Prompt viewings are encouraged. Please contact Aspen Estate Agents incorporating Waterfords to arrange your viewing.




Floor Plan




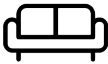
Features


- Charming three-bedroom detached home
- Quiet no-through lane, offering countryside tranquility with easy access to amenities
- Delightful rear garden with a large patio, lawn, and mature shrub borders for privacy
- Short walk to Chobham village, with a selection of pubs, restaurants, and boutique shops
- Off Street Parking/Driveway and Garage
- Good connectivity to major motorway networks, including the M3 and M25
- Close to Little Heath Common, Chobham Common for walking, cycling, and horse-riding trails
- Excellent transport links via Sunningdale and Woking train stations for access to London Waterloo

10 St Judes Road, Englefield Green, Surrey TW20 0BY
Tel 01784 433696
sales@aspenestateagents.co.uk

 3

 1

 2

 C

Tenure - Council Tax Band - F

