

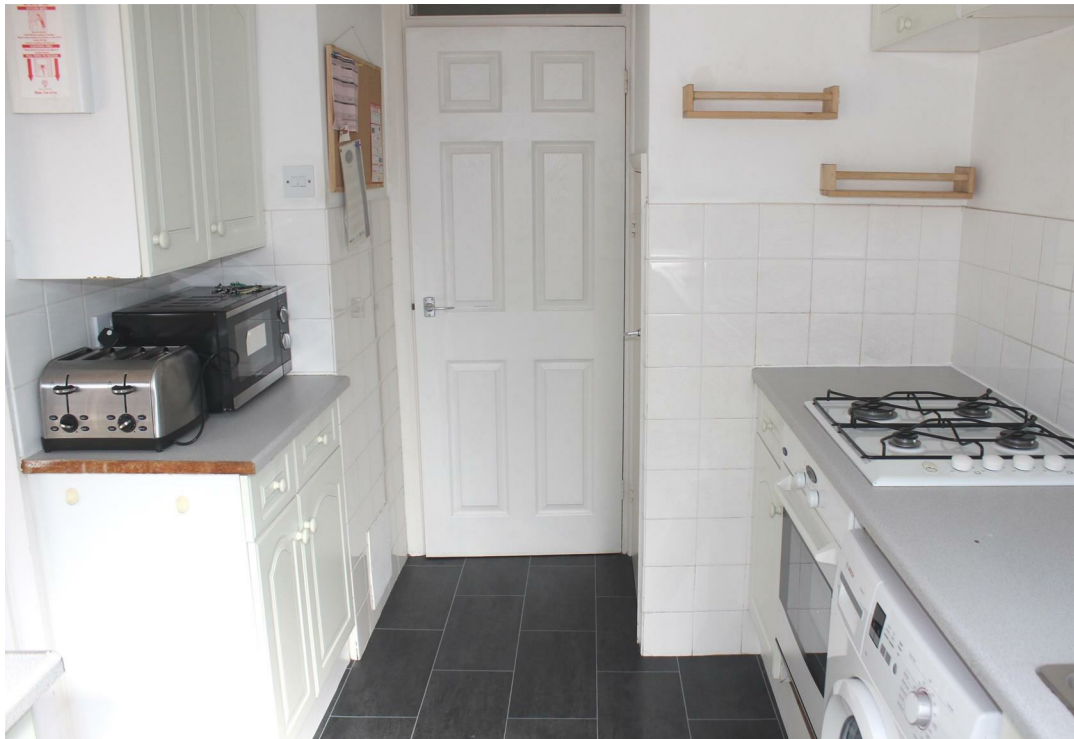


99 Beechtree Avenue, Egham, TW20 0TD

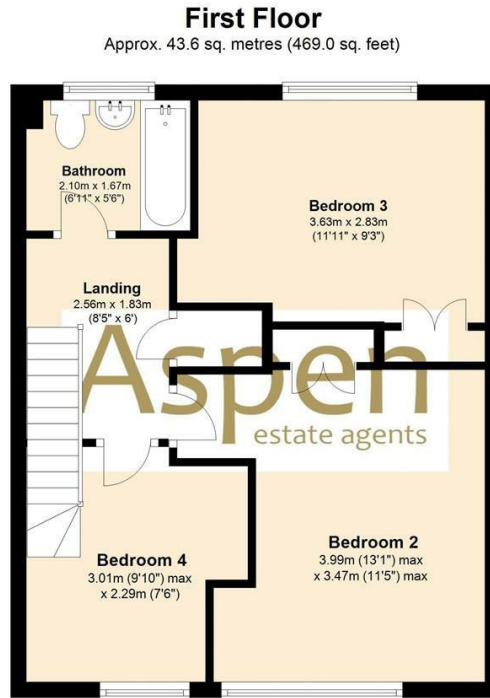
£2,100 PCM

99 Beechtree Avenue, Egham, TW20 0TD

A spacious and well-presented four-bedroom student house offering excellent accommodation throughout. The property features an entrance hall with W/C, a bright communal lounge, kitchen, and a large double bedroom on the ground floor. Upstairs offers two further double bedrooms, a generous single bedroom, and a bathroom. There is also an enclosed rear garden, perfect for socialising. Energy Rating: C.

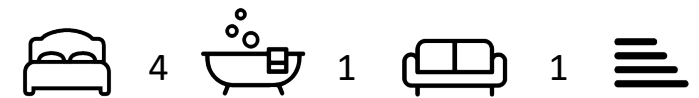


Floor Plan



Features

10 St Judes Road, Englefield Green, Surrey TW20 0BY
Tel 01784 433696
sales@aspenestateagents.co.uk



Tenure - Council Tax Band - D

