



Garden Flat B, Richardson House Coopers Hill Lane, Egham, TW20 0JY

£350,000

Garden Flat B, Richardson House Coopers Hill Lane, Egham, TW20 0JY

Enjoying an enviable location in this prestigious period property with its own front door, this 2 bedroom garden apartment has views up to the well stocked and manicured communal grounds, with Coopers Hill & Runnymede beyond.

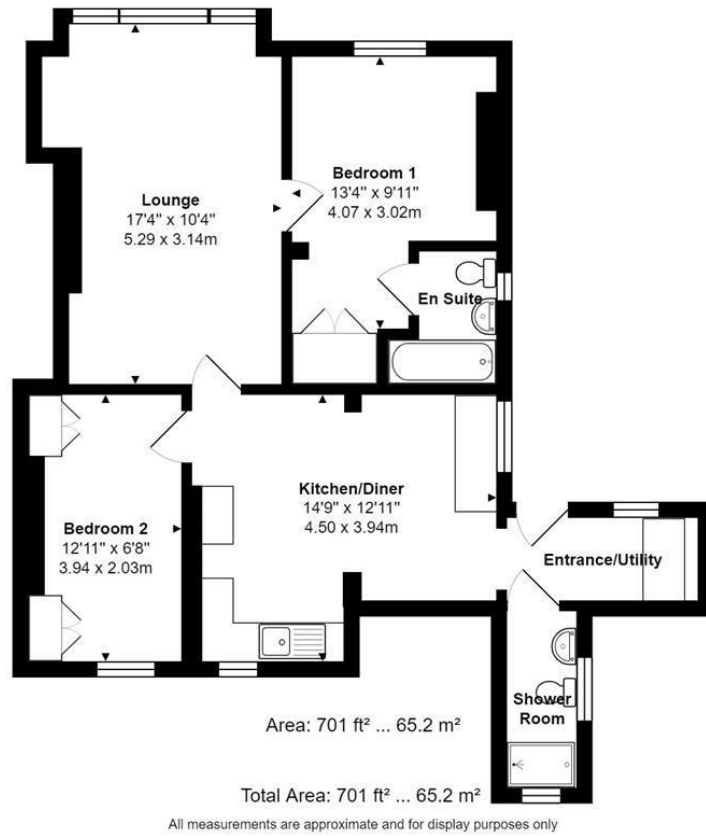
The accommodation is nicely laid out with excellent size kitchen/diner and the lovely sitting room with its wide sash windows overlooks the gardens. The main bedroom enjoys similar views and has an en suite bathroom. The second bedroom is a large single (previously had a double bed) with fitted wardrobes; there is also a second shower room, a small utility area and a gas central heating system to radiators. The property enjoys 2 allocated car parking spaces and a private shed, ideal for golf clubs. The communal gardens are simply superb, laid to lawn with a variety of mature shrubbery & trees providing both interest and excellent seclusion and various seating areas, where at the end one can enjoy the views over Coopers Hill & Runnymede beyond.

This property owns a share of the freehold with a head lease extended to 999 years around 12 months ago. The service charge is approx. £170 per month inclusive of building insurance. There is no ground rent. Council Tax Band: D. EPC Rating: D.



Floor Plan

Garden Flat B, Richardson House, Coopers Hill Lane



Features

10 St Judes Road, Englefield Green, Surrey TW20 0BY
Tel 01784 433696
sales@aspeneagents.co.uk

