



17 Aspen Gardens, Ashford, TW15 1ED

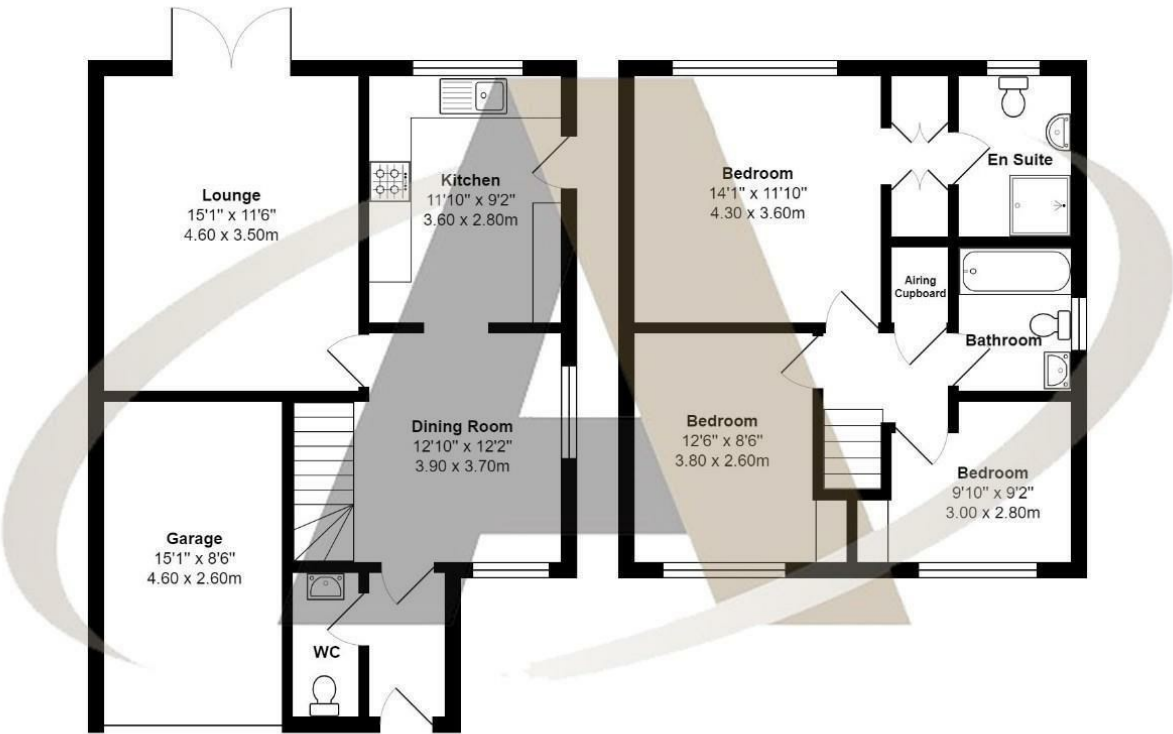
£1,925

17 Aspen Gardens, Ashford, TW15 1ED

Aspen Estate Agents are delighted to introduce this superb three-bedroom detached house for rent. Situated in a popular residential location this property is a must-see. Accommodation comprises three bedrooms, en suite shower room, bathroom, large lounge, dining area, large kitchen, and downstairs WC. Outside there is a good size garden, access to the garage, and off-road parking for two cars. This property is likely to attract a lot of attention and viewings can be booked by calling Aspen Estate Agents.



Floor Plan



Aspen Gardens, Ashford

Total Area: 1119 ft² ... 104.0 m²

All measurements are approximate and for display purposes only



Features

- 3 Bedrooms
- Private Road
- UNFURNISHED
- Available End of March 22
- Detached
- Off Street Parking
- En Suite to Master

