



59 Bond Street, Englefield Green, TW20 0PL

£460,000

59 Bond Street, Englefield Green, TW20 0PL

This attractive Victorian semi-detached house is situated in a residential area just a few minutes' walk of the village shops and a stone's throw from the excellent butcher shop. Schools are about a 10 minute walk and the picturesque village green, where cricket is still played and can even be enjoyed from a table at the Barley Mow pub is about a 6-7 minute walk. Windsor Great Park, with its wonderful walks and cycling, is enjoyed by locals and non-locals alike, with a couple of good short cuts getting you there in around a 15 minute walk.

The property has a good side access so great for getting bikes or motorbikes off the road and out of sight. There is a lovely living room at the front with bay window with shutters, high ceiling and rendered chimneybreast. The dining room is also an excellent size and leads into the kitchen, nicely appointed with duck-egg blue units, integrated appliances and deep solid wood work surfaces, with lots of natural light generated from two Velux windows set in the vaulted ceiling and window & door to the side/rear garden. There is a large downstairs bathroom including a bath with central taps and large shower enclosure with rainwater shower head.

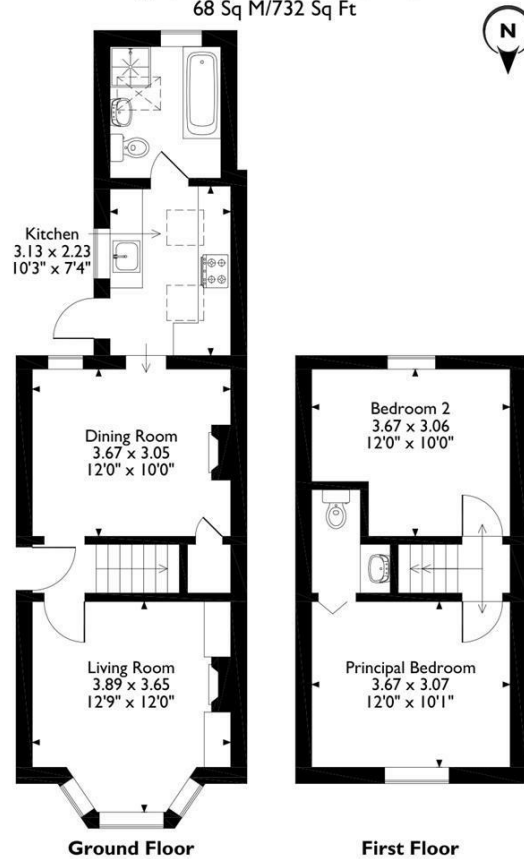
Upstairs are two double bedrooms with window shutters, with the master bedroom having an ensuite cloakroom. There is double glazing throughout, a gas central heating system to radiators and a 50' southerly aspect rear garden.

Viewings of this lovely character semi-detached home are highly recommended.
EPC Rating: D.



Floor Plan

59, Bond Street, Englefield Green, Englefield Green, Surrey
 Approximate Gross Internal Area
 68 Sq M/732 Sq Ft



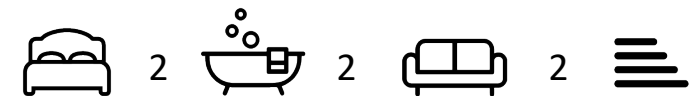
Please note that the location of doors, windows and other items are approximate and this floorplan is to be used for illustrative purposes only. Unauthorized reproduction is prohibited.



Features

- Victorian Semi-Detached
- En Suite Cloakroom
- Separate Dining Room
- Large Bathroom with Shower
- Double Glazed Throughout
- Two Double Bedrooms
- Lovely Living Room
- Light & Bright Kitchen
- Gas Central Heating
- 50' South Facing Garden

10 St Judes Road, Englefield Green, Surrey TW20 0BY
 Tel 01784 433696
 sales@aspenestateagents.co.uk



Tenure - Freehold Council Tax Band - D

