



24 Englefield Close, Englefield Green, TW20 0SE

£397,500



## 24 Englefield Close, Englefield Green, TW20 0SE

This 2 bedroom end of terrace house is situated on this small sought after development in a great central village location close to all the local shops and a short walk to the village green. It has the distinct advantage of a garage with its own personal door onto the garden as well as an allocated car parking space and additional spaces for residents on a first come first serve basis.

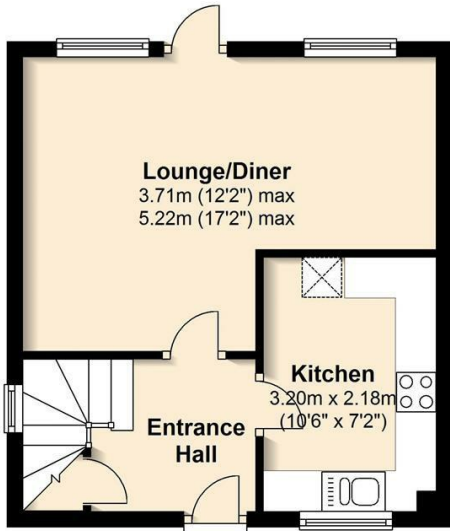
This has a proper house feel to it, with an entrance hall, separate kitchen, good size lounge/diner with doors out to the southerly facing patio garden whilst upstairs, off the landing, are the two bedrooms and bathroom. Council Tax band: D. EPC Rating: E.



Floor Plan

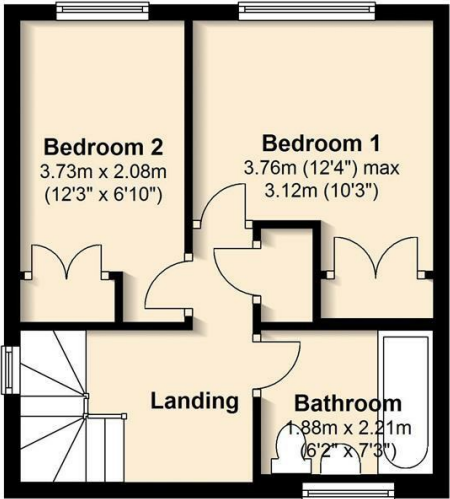
Ground Floor

Approx. 29.0 sq. metres (312.3 sq. feet)



First Floor

Approx. 28.7 sq. metres (309.4 sq. feet)



Total area: approx. 57.8 sq. metres (621.7 sq. feet)



Features

- 2 Bedroom House
- Detached on Ground Floor
- Separate Kitchen
- South Facing Garden
- Central Village Location
- End of Terrace
- Lounge/Diner
- Upstairs Bathroom
- Garage with door to Garden
- No Onward Chain



