



8 Kenilworth Road, Ashford, TW15 3EL

£2,900 Per Month

## 8 Kenilworth Road, Ashford, TW15 3EL

This property boasts an impressive five bedrooms, offering ample space for a large family or those who love to have guests over. With two reception rooms, there is plenty of room for entertaining or creating separate living spaces to suit your needs.

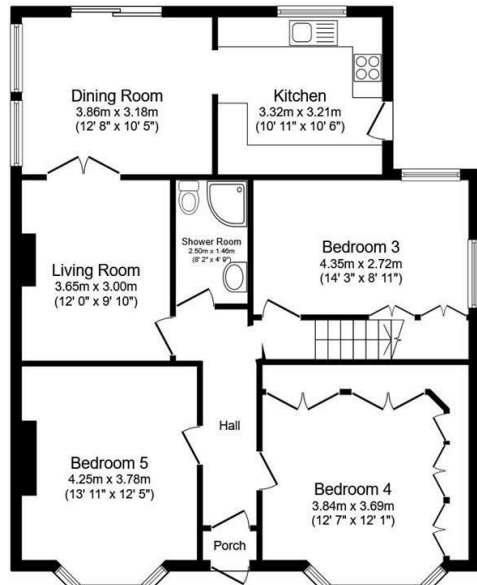
The property features a lovely garden, perfect for enjoying a cup of tea on a sunny afternoon or for children to play in. Additionally, the driveway parking provides convenience and ease for those with vehicles, ensuring you never have to worry about finding a parking spot.

Situated close to transport links, this home offers easy access to the surrounding areas, making commuting a breeze. Whether you need to travel for work or leisure, you'll appreciate the convenience of the location.

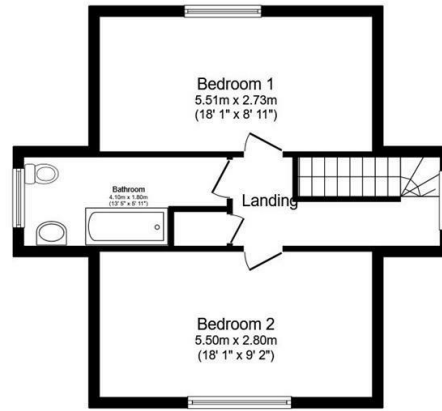
Don't miss out on the opportunity to own this fantastic property with great potential. Book a viewing today and envision the possibilities of making this house your new home!



# Floor Plan



**Ground Floor**



**First Floor**

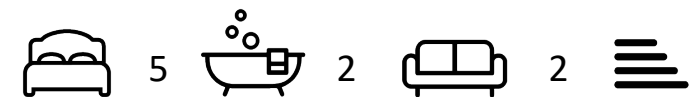


## Features

Total floor area 142.3 m<sup>2</sup> (1,531 sq.ft.) approx

This floor plan is for illustrative purposes only. It is not drawn to scale. Any measurements, floor areas (including any total floor area), openings and orientation are approximate. No details are guaranteed, they cannot be relied upon for any purpose and they do not form part of any agreement. No liability is taken for any error, omission or misstatement. A party must rely upon its own inspection(s). Powered by [www.focalagent.com](http://www.focalagent.com)

10 St Judes Road, Englefield Green, Surrey TW20 0BY  
 Tel 01784 433696  
[sales@aspenestateagents.co.uk](mailto:sales@aspenestateagents.co.uk)



Tenure - Council Tax Band -

