



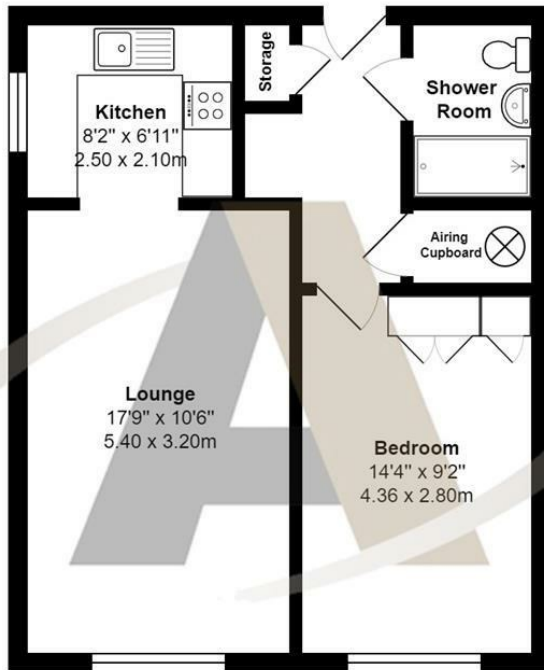
24 Manor Farm Court, Egham, TW20 9JR

Aspen Estate Agents are delighted to introduce this charming 2nd-floor, 1-bedroom retirement property located in the heart of Egham. Nestled in a highly convenient location, this delightful apartment offers easy access to an array of local amenities and well-maintained communal grounds and lounge, ensuring a comfortable and fulfilling lifestyle. Within close proximity, you'll find popular shops such as Waitrose, Tesco, a vibrant cinema, and various coffee shops and restaurants, allowing for effortless convenience and entertainment.

This property truly stands out, boasting brand new carpets and flooring throughout, and has been recently redecorated. Manor Farm Court has lovely gardens and this apartment offers the best views within the development (in our opinion). Other notable features include a new walk-in shower, a kitchen window for additional light, built-in wardrobes in the bedroom, plenty of storage, ample resident parking, a lift serving all floors, a communal lounge with events, a house manager on site, and emergency call bells monitored 24/7. This development is available for over 55's only; We are waiting certain lease information, though the current owner is planning to have the lease extended which, we have been told, would bring it up to a 150+ year lease. Viewing highly recommended as this flat should be seen to be appreciated. Viewings can be booked by calling Aspen Estate Agents.



Floor Plan



24 Manor Farm Court, Egham

Total Area: 508 ft² ... 47.2 m²

All measurements are approximate and for display purposes only



Features

- Retirement Apartment
- Large Lounge
- Communal Gardens and Lounge
- Call Bells Monitored 24/7
- Close to Egham Town Centre
- One Double Bedroom
- Modern Shower Room
- House Manager
- Over 55's Only
- Viewing Highly Recommended.

