



52 Beverley Court Cedar Drive, Sunningdale, SL5 0UB

£285,000

52 Beverley Court Cedar Drive, Sunningdale, SL5 0UB

Popular Top Floor Apartment in Sought-After Beverley Court, Cedar Drive

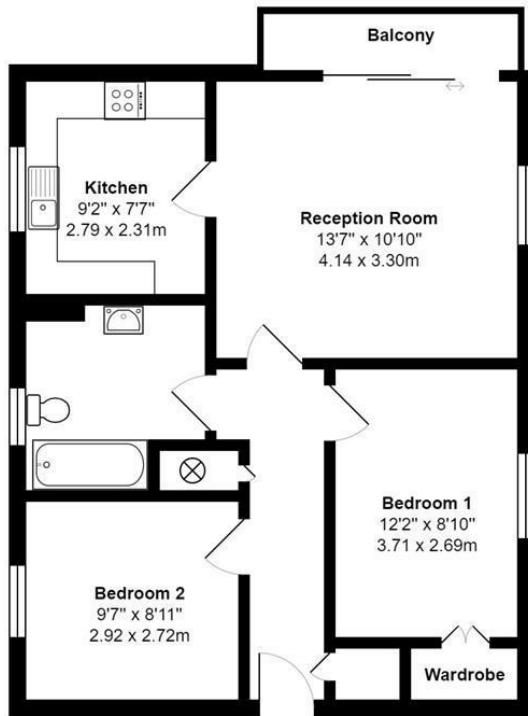
Located in the ever-popular Beverley Court, this well-presented two double bedroom top floor apartment offers an excellent opportunity for first-time buyers and buy-to-let investors alike. Ideally positioned just a short walk from Sunningdale Station and local shops, this property combines convenience with comfortable living.

The accommodation is bright and spacious throughout, featuring two generously sized double bedrooms, a dual aspect lounge with balcony, a separate well-equipped kitchen, and modern bathroom.

This property benefits from additional storage in the eaves via loft ladder, garage in a block, and communal gardens. This property must be seen to be fully appreciated.



Floor Plan



Approximate Area: 560 ft² ... 52.0 m²

All measurements are approximate and for display purposes only



Features

- Two double bedroom apartment
- Living room with balcony
- Garage in block
- Close to Sunningdale Station
- Close to Charters School
- Top floor
- Gas central heating
- Additional Residents parking
- Access to loft space via loft ladder
- Communal garden



Tenure - Leasehold Council Tax Band - D

