



36 Corby Drive, Englefield Green, TW20 0SD

£399,950



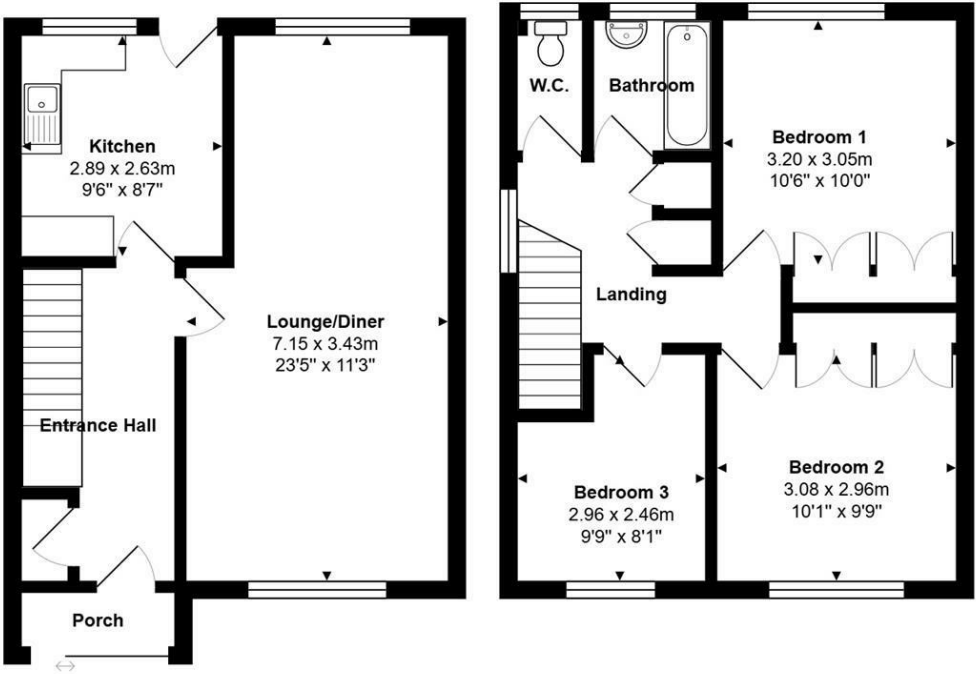
## 36 Corby Drive, Englefield Green, TW20 0SD

IDEAL PROJECT. This three bedroom semi-detached house is situated at the end of a quiet road, within a short walk to the village shops and Windsor Great Park. There is off road parking for two cars at the front and a gas central heating system to radiators, however the property is in need of complete updating, which we have reflected in the price, and would make a fantastic project for a first time buyer!

EPC Rating: TBC



Floor Plan



Total Area: 83.9 m<sup>2</sup> ... 903 ft<sup>2</sup>



Features

10 St Judes Road, Englefield Green, Surrey TW20 0BY  
Tel 01784 433696  
sales@aspenestateagents.co.uk



Tenure - Freehold Council Tax Band - D



