



1 Greenacre Court, Englefield Green, TW20 0RF

£3,300 PCM

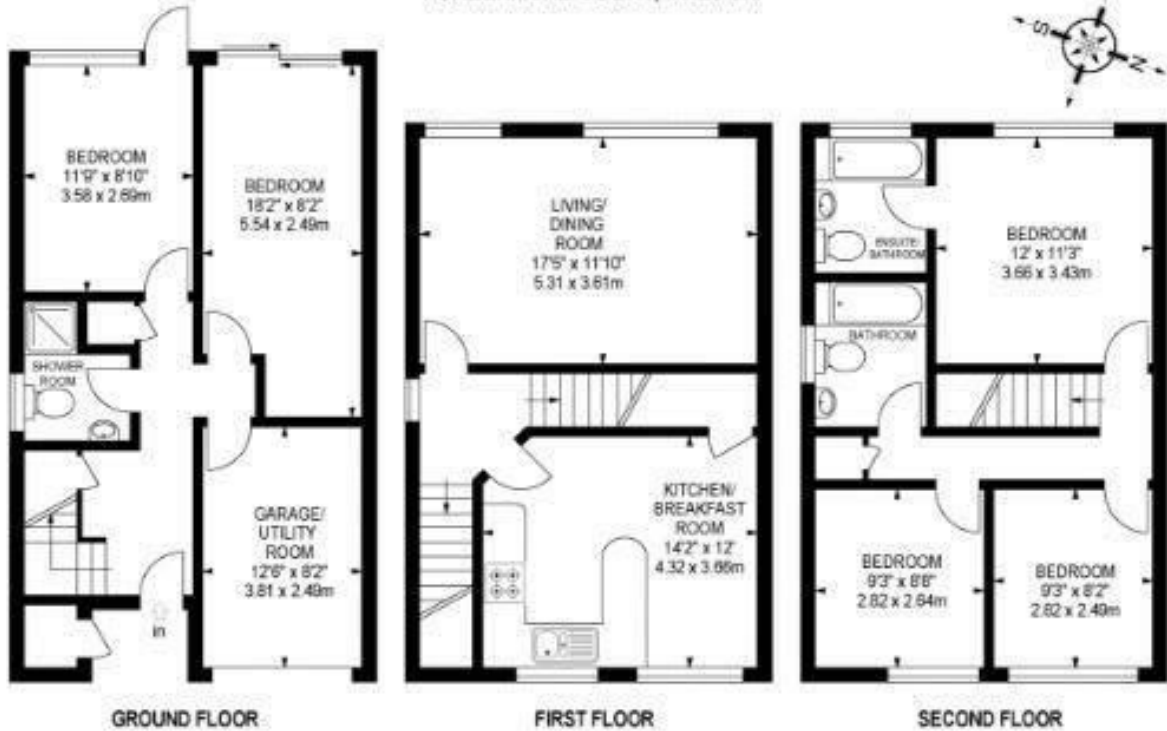
1 Greenacre Court, Englefield Green, TW20 0RF

This fantastic 5 bedroom/3 bathroom end of terrace student house offers very well laid out accommodation over three floors and so close to the front gate of the university! There are two bedrooms and a shower room on the ground floor with a large utility room. On the first floor is a large kitchen/breakfast room and spacious communal lounge. The second floor has 3 further bedrooms and two bathrooms, one of which is en suite! There is off gas central heating to radiators, double glazing and off road parking. Available for a 12 month tenancy. ALL UTILITY BILLS INCLUDED (*fair usage cap applies to gas & electric) along with TV licence and garden maintenance. EPC Rating: E.



Floor Plan

1 GREENACRE COURT, TW20 0RF



APPROX. GROSS INTERNAL FLOOR AREA 1484 SQ FT / 137.86 SQ M

This plan is for layout guidance only. Not drawn to scale unless stated. Windows & door openings are approximate. Whilst every care is taken in the preparation of this plan, please check all dimensions, shapes & compass bearings before making any decisions reliant upon them.
Estate Services © 2012 www.estateservices.org.uk



Features

- 5 Bedrooms
- Very Large Lounge
- Good Size Garden
- Garden Maintenance Included
- Broadband Included
- 3 Bathrooms
- Big Kitchen/Breakfast Room
- Off Road Parking
- *Bills Included
- *gas/electric capped

