



Flat 4 Dorney House Queenswood Crescent, Egham, TW20 0AS

£399,000

Flat 4 Dorney House Queenswood Crescent, Egham, TW20 0AS

INVESTMENT BUYERS ONLY: We are delighted to offer this lovely 730 square foot two double bedroom, 2 bathroom ground floor apartment, situated directly opposite Windsor Great Park in the prestigious Virginia Gate development, completed in 2017 by renowned builders CALA Homes.

Ideal for, and adored by, dog walkers, cyclists and nature lovers, Windsor Great Park is much loved by locals and visitors alike and has stunning scenery to calm the soul! It is also a very convenient position, with Englefield Green village centre less than half a mile and Egham town centre shops and train station approximately one and a quarter miles distant.

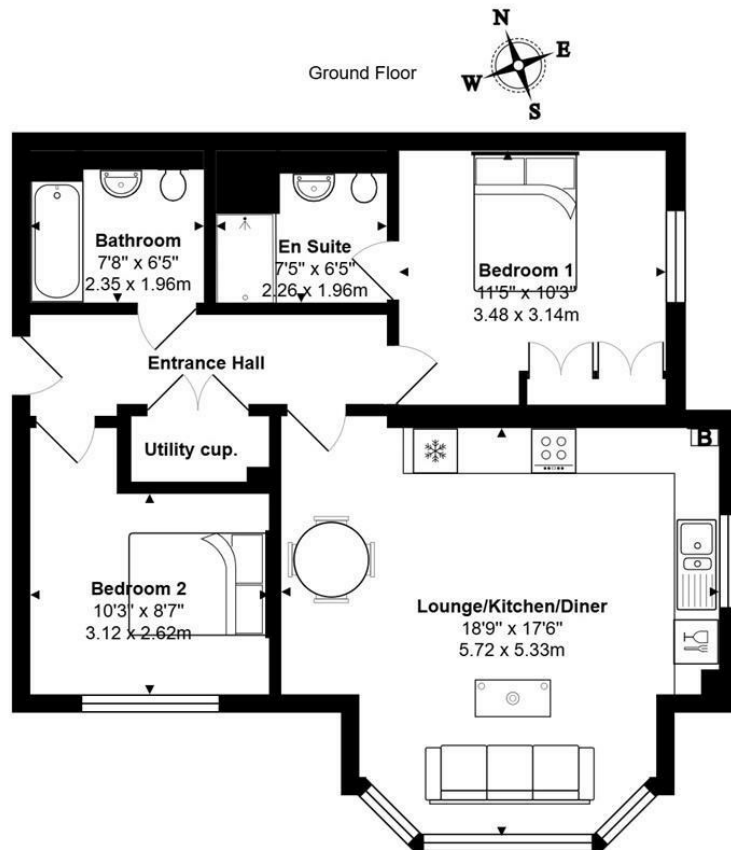
The apartment offers well arranged accommodation with an entrance hall with a utility cupboard, a large lounge/dining room open plan to a well-fitted kitchen area, a master bedroom fitted wardrobes and en-suite shower room and a second double bedroom and bathroom. The windows are double glazed and there is a gas central heating system to radiators.

Outside there are landscaped communal grounds and allocated off-street parking for TWO CARS to the rear of the building. There is also a locked bike storage accessible for all residents. The property is currently 'let' until the middle of July 2026 at a rent of £1,800pcm.

Viewings are strongly advised. EPC Rating: B.



Floor Plan



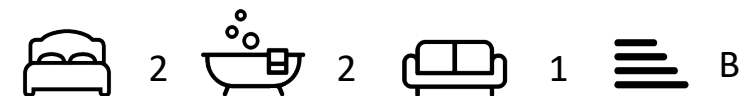
Total Area: 730 ft² ... 67.8 m²



Features

- Stunning Location
- 730 Sq Ft of accommodation
- En Suite Shower Room
- Large Lounge/Kitchen/Diner
- 2 Parking Spaces
- Opposite Windsor Great Park
- Two Double Bedrooms
- Separate Bathroom
- D'Glazed & Gas C.H.
- No Chain

10 St Judes Road, Englefield Green, Surrey TW20 0BY
Tel 01784 433696
sales@aspenestateagents.co.uk



Tenure - Leasehold Council Tax Band - D

