



13 Lynwood Avenue, Egham, TW20 9RE

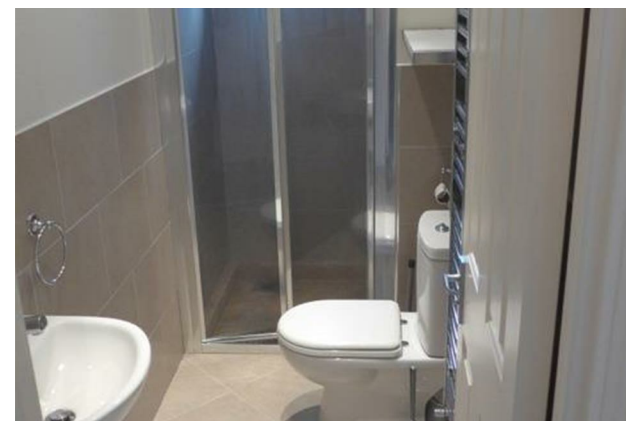
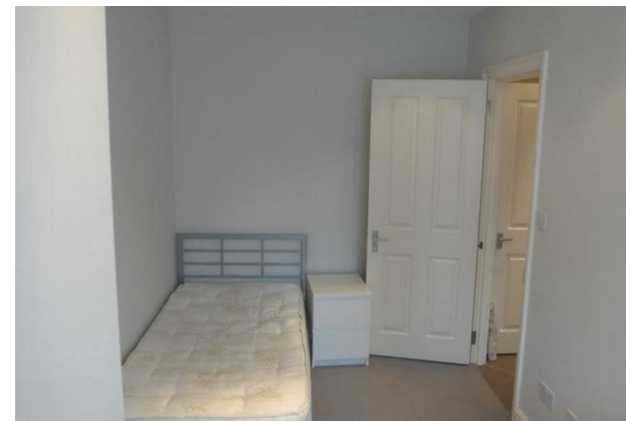
£3,450 PCM

13 Lynwood Avenue, Egham, TW20 9RE

This 6 bedroom, 4 bathroom semi-detached Student house has to be one of the best student properties in Egham. It is located within a 2-3 minute walk of the back gate of the university and just a few minutes' further to Egham's main shops and train station. The property has accommodation over 3 levels, with each floor having 2 bedrooms and a bath/shower room, with one bedroom also having an en suite shower room. There is a good size living room with wall-mounted TV, modern fitted kitchen with dishwasher, rear garden and off road parking to the front. It is available on a 12 month tenancy. EPC Rating: C.



Floor Plan



Features

- 6 Bed Semi-Detached Student House
- 3 Doubles & 3 Good Singles
- 4 Bathrooms
- Lounge with TV
- Fitted Kitchen
- Gas Central Heating
- Double Glazed Windows
- Rear Garden
- Off Road Parking
- 2-3 Minutes' Walk to Uni

