

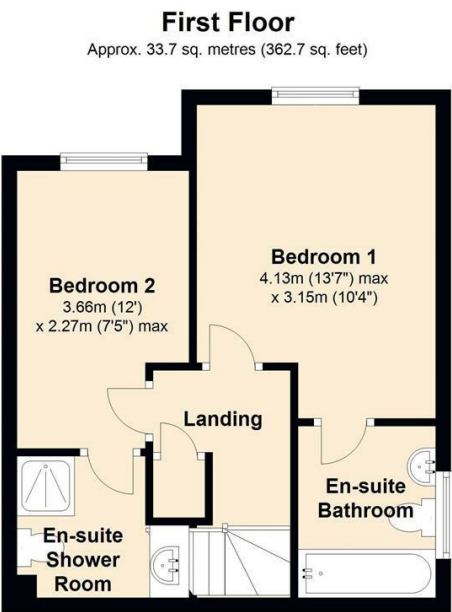


1 Burnham Mews, Barley Mow Road, Egham, TW20 0LW

A two bedroom House with two en suite bath/shower rooms with a fitted kitchen, downstairs w.c. and a large living room with access to the communal gardens, off road parking for one car, just a short walk to the shops, Royal Holloway University. There is gas central heating double glazed windows. Energy Rating C. Available 21st September 2025



Floor Plan



Features

10 St Judes Road, Englefield Green, Surrey TW20 0BY
Tel 01784 433696
sales@aspenstagents.co.uk



Tenure - Council Tax Band - D

