



Flat 3, Thames Edge Court Clarence Street, Staines-Upon-Thames, TW18

£265,000

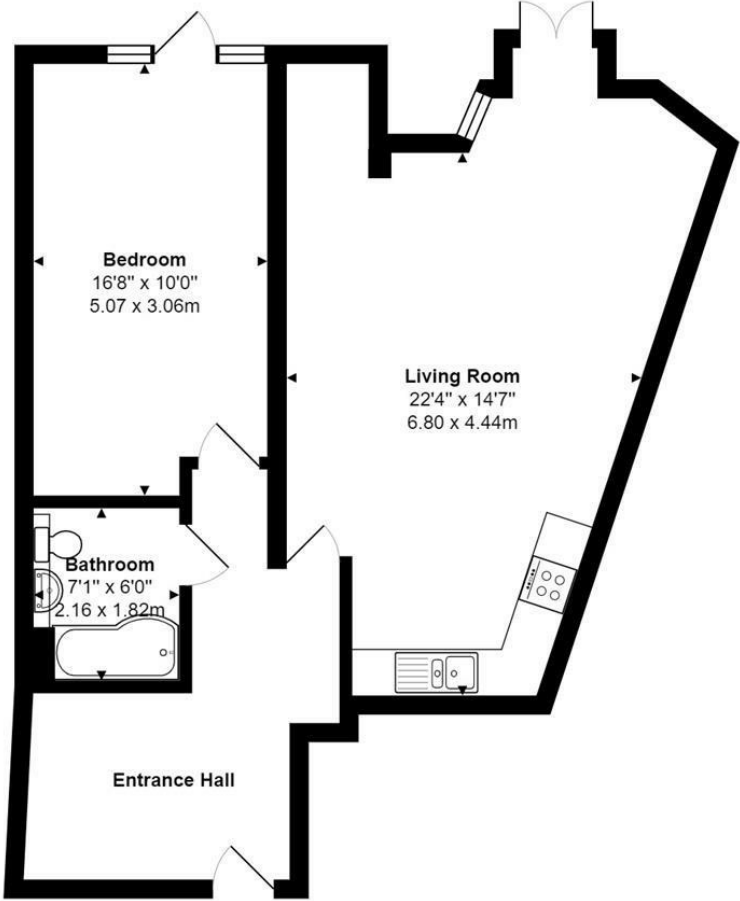
4BU

Flat 3, Thames Edge Court Clarence Street, Staines-Upon-Thames, TW18 4BU

This is a fantastic opportunity to purchase a one bedroom apartment situated in the heart of Staines-upon-Thames. Whilst at the front of the development, to the rear is also a communal courtyard with tables and chairs which allows you to enjoy views of the river Thames. It offers a large open plan living area and kitchen space with all appliances, generous double bedroom and a spacious bathroom. The property is located on the first floor with lift/elevators up to each floor in the building. The flats are located adjacent to the River Thames and are within walking distance to all amenities. This includes local primary schools, secondary schools, food shopping, clothes shopping, restaurants and a lovely local market. The train station is also only 0.75 miles from the property. EPC Rating: E.



Floor Plan



Features

- 1 Bed
- 1 Bath
- 1 Sofa
- Entrance

