



4 The Crescent, Egham, TW20 9PH

£4,000 PCM

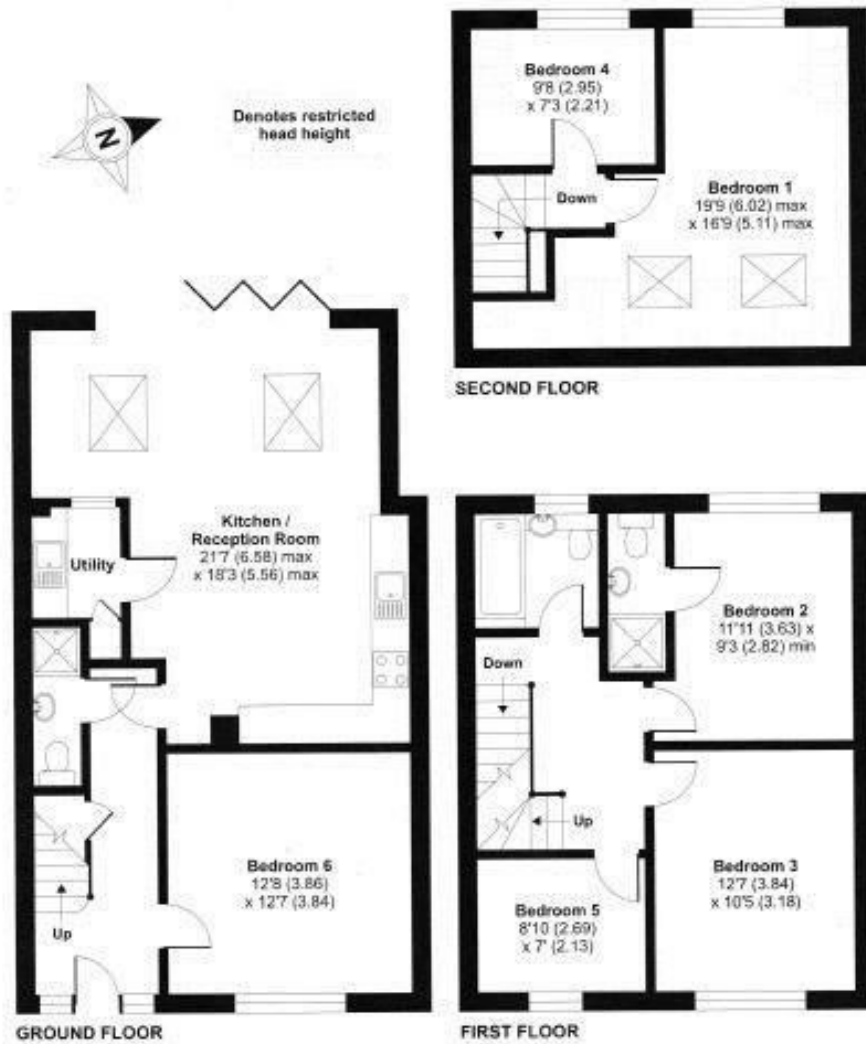
4 The Crescent, Egham, TW20 9PH

Very well presented student property in Egham. The house is ideally situated for the back gate to RHUL and boasts five bedrooms, one of which has an additional study room (bedroom 5 on the floor plan goes with bedroom 4). There are three bath/shower rooms (one which is en-suite), a spacious open plan Lounge/Kitchen/Diner with bi-fold doors onto the rear garden and a utility room. There is also off road parking for two cars and internal inspection is highly recommend to fully appreciate the property. Furnished to a high standard and managed by an experienced local landlord. EPC Rating: D.



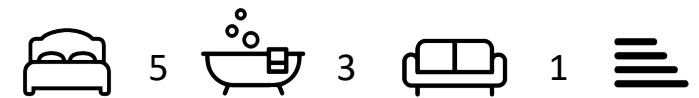
Floor Plan

APPROX. GROSS INTERNAL FLOOR AREA 1428 SQ FT 132.6 SQ METRES (EXCLUDES RESTRICTED HEAD HEIGHT)



Features

10 St Judes Road, Englefield Green, Surrey TW20 0BY
 Tel 01784 433696
 sales@aspenestateagents.co.uk



Tenure - Council Tax Band - D

