



10 Windsor Drive, Ashford, TW15 3JE

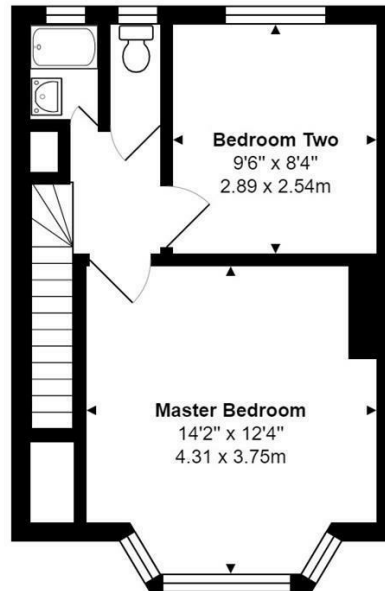
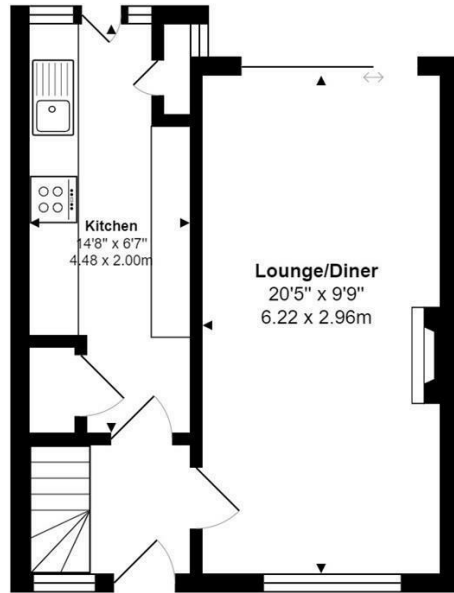
£1,650 Per Month

10 Windsor Drive, Ashford, TW15 3JE

Located close to Ashford Park Primary School is this terraced family home. The property offers; entrance hall, through lounge/diner with doors to an enclosed rear garden, galley fitted kitchen, two bedrooms, family bathroom and a separate cloakroom. Benefits include; gas central heating, off street parking and double glazed windows. AVAILABLE MID JULY 2025 on an UNFURNISHED basis.



Floor Plan



Features

- UNFURNISHED
- Two Bedrooms
- Gas Central Heating
- Enclosed Rear Garden
- Terraced Family Home
- Fitted Kitchen
- Through Lounge Diner
- Bathroom
- Separate Cloakroom
- AVAILABLE JULY 2025

