



1 Bourne House Percy Avenue, Ashford, TW15 2PA

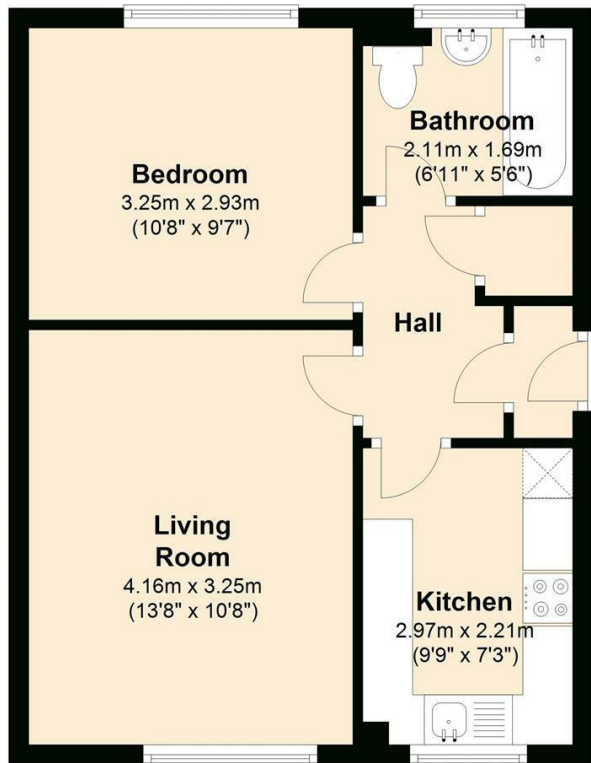
This one double bedroom ground floor apartment is available on an unfurnished basis. It is located at the end of a side road off Church Road....Ashford's high street, so within a 2-3 minute walk of most of the shops. Ashford's mainline train station is about a 10-minute walk. Accommodation comprises entrance hall, living room, separate fitted kitchen with washing machine and tumble dryer, double bedroom with wardrobes and bathroom with wall mounted shower. Windows are double glazed and there is electric heating. There is residents' parking and a small area of communal garden. Available 20th April 2022 Council Tax band: C. EPC Rating: E.



Floor Plan

Ground Floor

Approx. 39.5 sq. metres (425.0 sq. feet)



Features

- Ground Floor Apartment
- Living Room
- Bathroom with Shower
- Electric Heating
- Close to the Shops
- 1 Double Bedroom
- Separate Fitted Kitchen
- Double Glazed
- Just off the High Street area
- Unfurnished

