



31 Farnell Road, Staines-upon-Thames, TW18 4HT

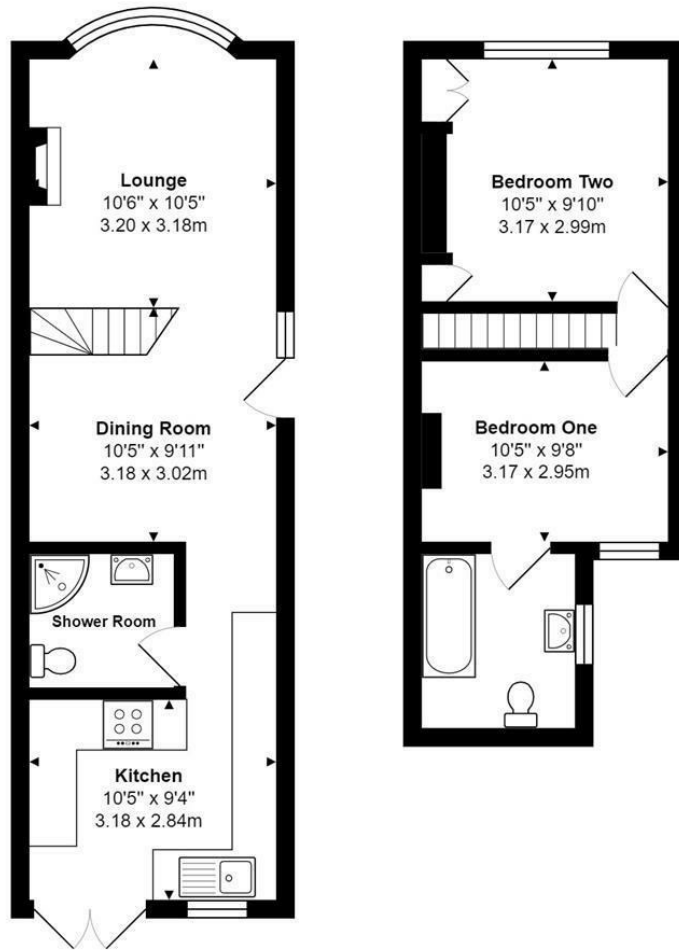
£1,700 Per Month

## 31 Farnell Road, Staines-upon-Thames, TW18 4HT

A truly stunning Victorian Cottage, located within easy reach of Staines upon Thames town centre, local motorway networks and Heathrow Airport. The interior fixtures and fittings are of high quality, including a recently installed bathroom. The ground floor offers an open plan lounge/diner with staircase to the first floor, feature fireplaces & hard wood flooring, a beautiful shaker style kitchen with appliances and character flooring, ground floor shower room. The first floor provides two double bedrooms, both with built-in wardrobes, and a luxury newly fitted bathroom. To the rear is an enclosed garden with patio area, brick built shed & BBQ. Benefits include; gas central heating, double glazing. Available from MID MAY 2024 on an UNFURNISHED basis.



# Floor Plan



## Features

- Two Double Bedrooms
- Separate Shower Room
- Luxury Bathroom
- Modern Fitted Kitchen with Appliances
- AVAILABLE MID MAY 2024
- UNFURNISHED
- Open Plan Lounge/Diner
- Victorian Cottage
- Enclosed Private Garden

