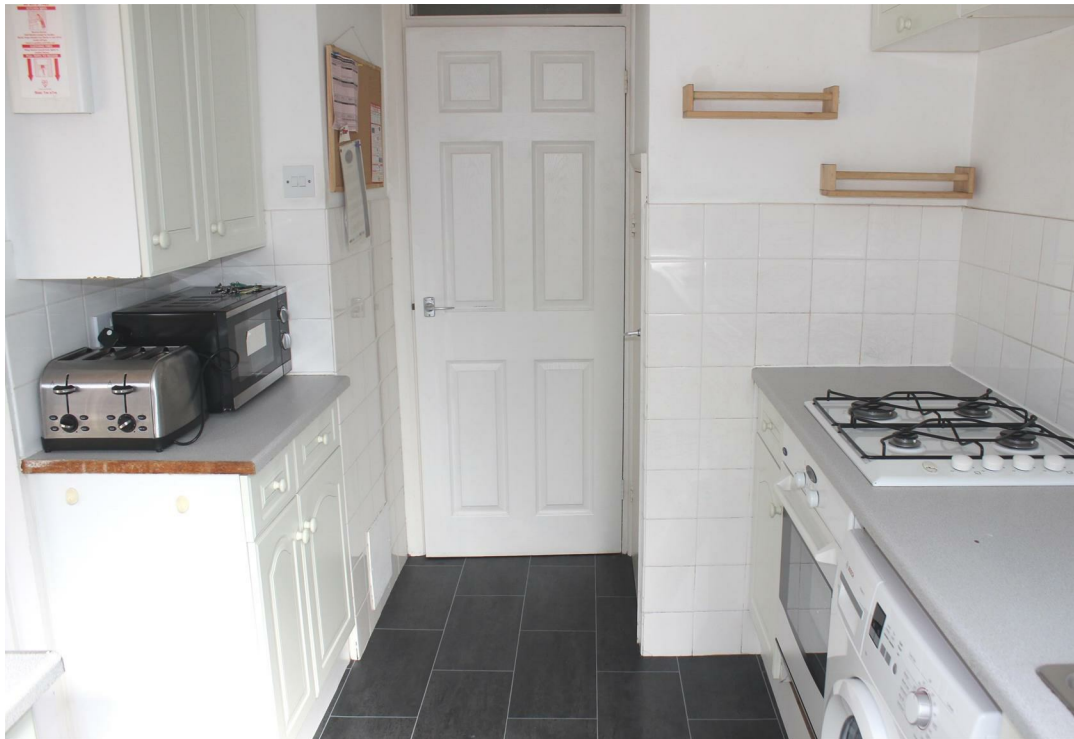






## 99 Beechtree Avenue, Egham, TW20 0TD

A four bedroom student house offers excellent accommodation to include entrance hall with w/c, communal lounge, kitchen and large double bedroom downstairs; upstairs has two double bedrooms, a large single bedroom and a bathroom. There is an enclosed rear garden. Energy Rating C.



Floor Plan





