



1b Blays Close, Egham, TW20 0PE

£1,500 Per Month

1b Blays Close, Egham, TW20 0PE

Welcome to this charming maisonette located in the sought-after area of Blays Close, Englefield Green, Egham. This delightful property boasts a cosy reception room, perfect for relaxing or entertaining guests. With two bedrooms, there is ample space for a small family, guests, or even a home office.

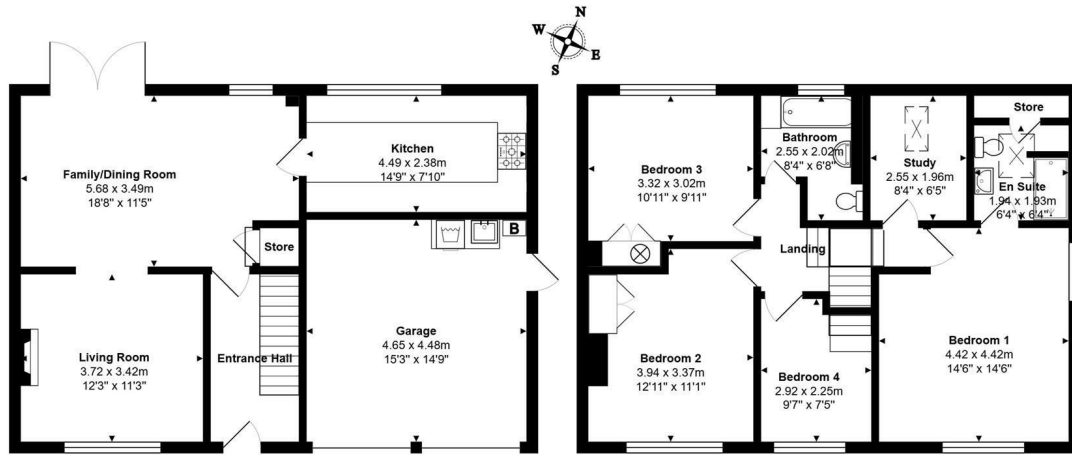
The property features a well-maintained bathroom, ensuring convenience and comfort for the residents. Additionally, the private garden offers a tranquil outdoor space to enjoy a morning coffee or host a summer barbecue. The convenience of having your own entrance adds a touch of exclusivity to this lovely home.

Parking is always a premium, but fear not, as this maisonette comes with allocated parking for one vehicle, making your daily commute or weekend outings hassle-free. The recent redecoration adds a fresh and modern feel to the property, allowing you to move in and start enjoying your new home right away.

Situated close to the university, this property is ideal for students, faculty members, or anyone who enjoys the vibrant atmosphere of a university town. Whether you're looking for a cozy home to settle down in, this maisonette in Blays Close offers a perfect blend of comfort, convenience, and charm.



Floor Plan

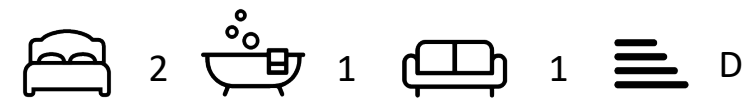


Total Area: 142.5 m² ... 1534 ft²



Features

10 St Judes Road, Englefield Green, Surrey TW20 0BY
 Tel 01784 433696
 sales@aspenstateagents.co.uk



Tenure - Council Tax Band - C

