



8 Princes Court Bond Street, Englefield Green, TW20 0QQ

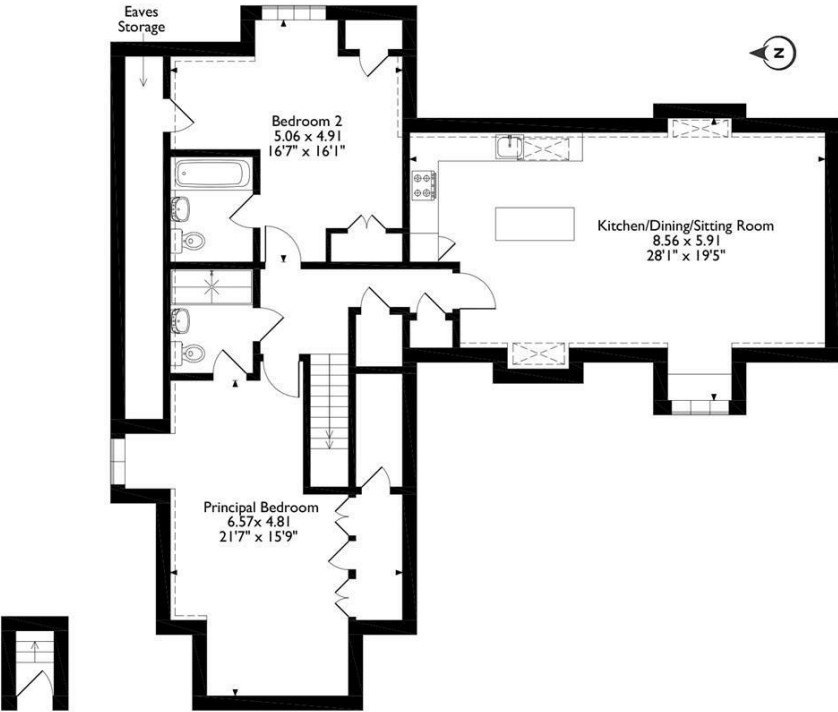
This stunning penthouse apartment at Princes Court, Englefield Green, offers massive accommodation of almost 1,200 square feet and an exceptional living experience, with a huge combined kitchen/dining/living room with new flooring throughout. The beautifully re-fitted kitchen area boasts a large island unit, creating a perfect space for cooking and entertaining. Natural light floods the room, enhancing the inviting atmosphere that makes this an ideal setting to unwind or host guests. The apartment features two superb double bedrooms, complemented by two bath/shower rooms for added convenience. Additional highlights include gas central heating to radiators, double glazing, and two allocated car parking spaces, offering both comfort and practicality in a sought-after location.

The village green and shops are within a 4-5 minute walk, whilst Egham's comprehensive shopping with a Tesco, Waitrose and mainline train station, is about 1.25 miles away. Heathrow can be reached in about 15 minutes, as can the M25, M4 and M3 motorways. The beautiful Windsor Great Park, with Virginia Water and Savill Gardens can be reached in 5-10 minutes, offering stunning areas to walk, cycle and horse ride. EPC Rating: C.



Floor Plan

Princes Court, Flat 8, Bond Street, Englefield Green, Surrey
Approximate Gross Internal Area
109 Sq M / 1174 Sq Ft
(Excluding Eaves Storage)



First Floor

Second Floor

Please note that the location of doors, windows and other items are approximate and this floorplan is to be used for illustrative purposes only. Unauthorized reproduction is prohibited.



Features

- Stunning Penthouse Apartment
- En Suite Bathroom & Shower
- Re-Fitted Kitchen area
- Gas Central Heating to Radiators
- Easy Access to The Park
- 2 Double Bedrooms
- Huge Living/Kitchen/Dining Room
- Double Glazing
- 2 Allocated Parking Spaces
- Must Be Seen

10 St Judes Road, Englefield Green, Surrey TW20 0BY
Tel 01784 433696
sales@aspenestateagents.co.uk



Tenure - Leasehold Council Tax Band - D

