



24 Englefield Close, Englefield Green, TW20 0SE

£375,000

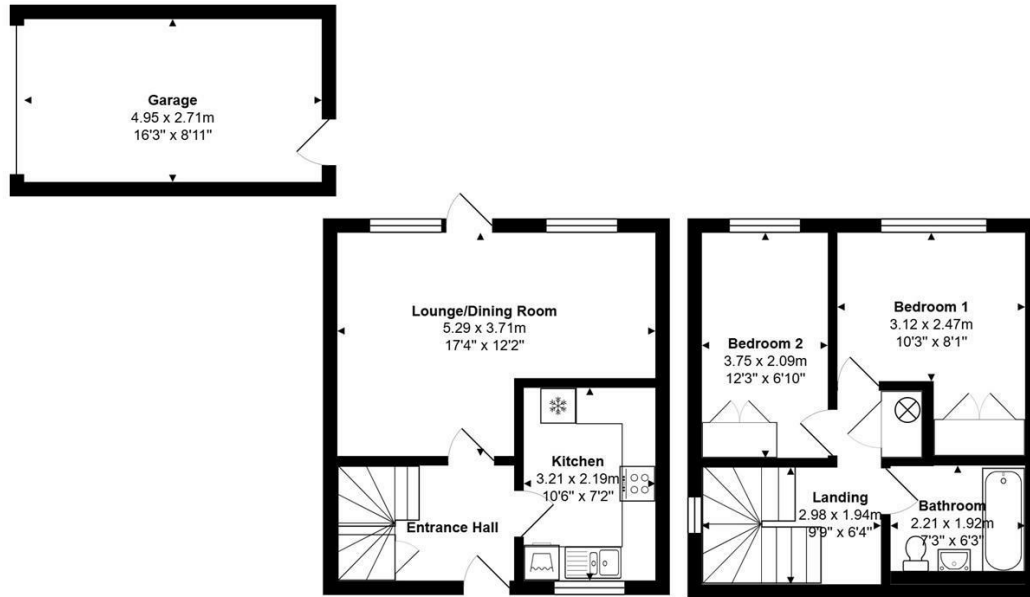
## 24 Englefield Close, Englefield Green, TW20 0SE

This 2 bedroom end of terrace house is situated on a small, delightful development in a great central village location close to all the local shops, bus stop and a short walk to the village green. It has the distinct advantage of a garage with its own personal door onto the south facing garden as well as an allocated car parking space!

This has a proper house feel to it, with an entrance hall with a dog-legged staircase, separate kitchen, good size lounge/diner with doors out to the southerly facing patio garden, whilst upstairs, off the landing (which also has a window), are the two bedrooms and a bathroom. There is no onward chain, so a prompt purchase can be offered to a motivated buyer. The owner is currently pursuing the Freehold purchase. EPC Rating: E.



# Floor Plan



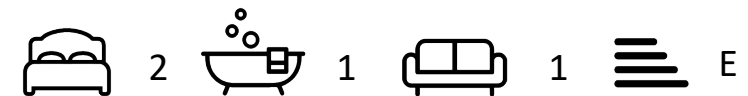
Total Area: 75.5 m<sup>2</sup> ... 812 ft<sup>2</sup>



## Features

- 2 Bedroom House
- Detached on Ground Floor
- Separate Kitchen
- South Facing Garden
- Central Village Location
- End of Terrace
- Lounge/Diner
- Upstairs Bathroom
- Garage with door to Garden
- No Onward Chain

10 St Judes Road, Englefield Green, Surrey TW20 0BY  
 Tel 01784 433696  
 sales@aspenestateagents.co.uk



Tenure - Leasehold Council Tax Band - D

