





## 21 Greenacre Court, Egham, TW20 0RF

This two double bedroom second (top) floor apartment has bright & airy accommodation, which is well laid out, with all rooms off the hallway. The accommodation comprises an excellent size lounge/diner, good size fitted kitchen with built in appliances, bathroom and the two double bedrooms.

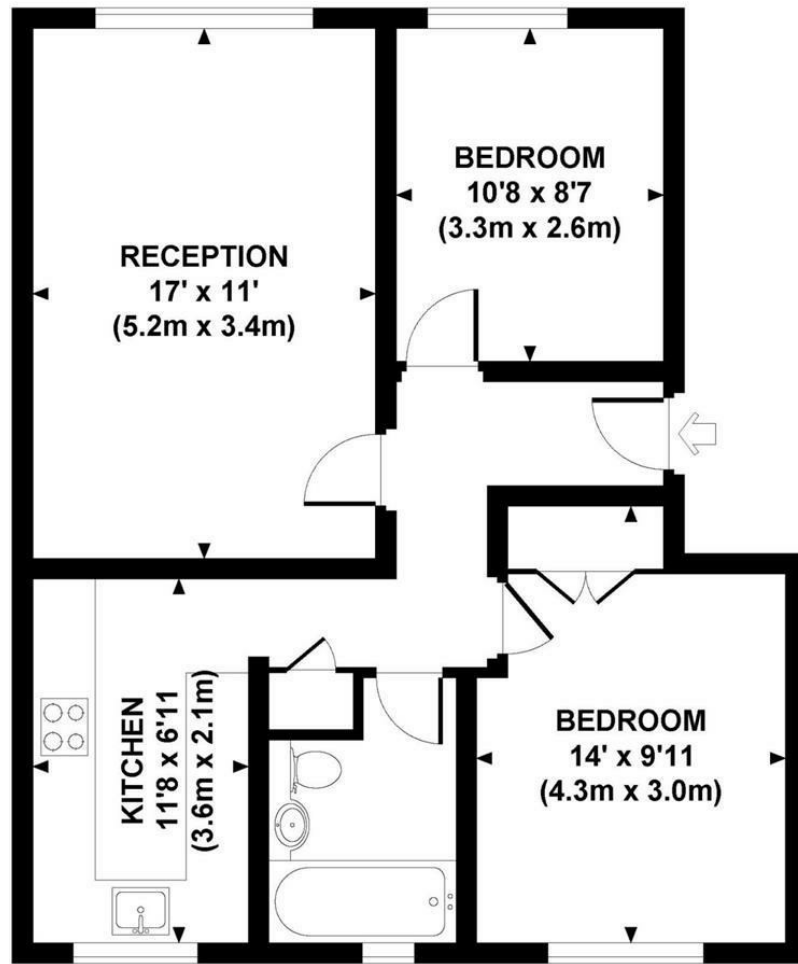
Windows are double glazed and there is a gas central heating system to radiators, residents' parking (on a first come first serve basis) and a garage! There is a lease extension being undertaken to create a 125 year lease at a nil ground rent and £1,800pa service charge. Energy Rating: C.



## Floor Plan

### GREENACRE COURT, TW20

Approx. gross internal area  
640 Sq Ft. / 59.5 Sq M.



**SECOND FLOOR**



### Features

- Top Floor Flat
- Large Lounge/Diner
- D' Glazing & Gas C.H.
- Garage
- Great Rental Potential
- 2 Double Bedrooms
- Good Size Fitted Kitchen
- White Bathroom Suite
- Superb First Time Buy
- No Chain

10 St Judes Road, Englefield Green, Surrey TW20 0BY  
Tel 01784 433696  
sales@aspenestateagents.co.uk



Tenure - Leasehold Council Tax Band - C

